

GLP117



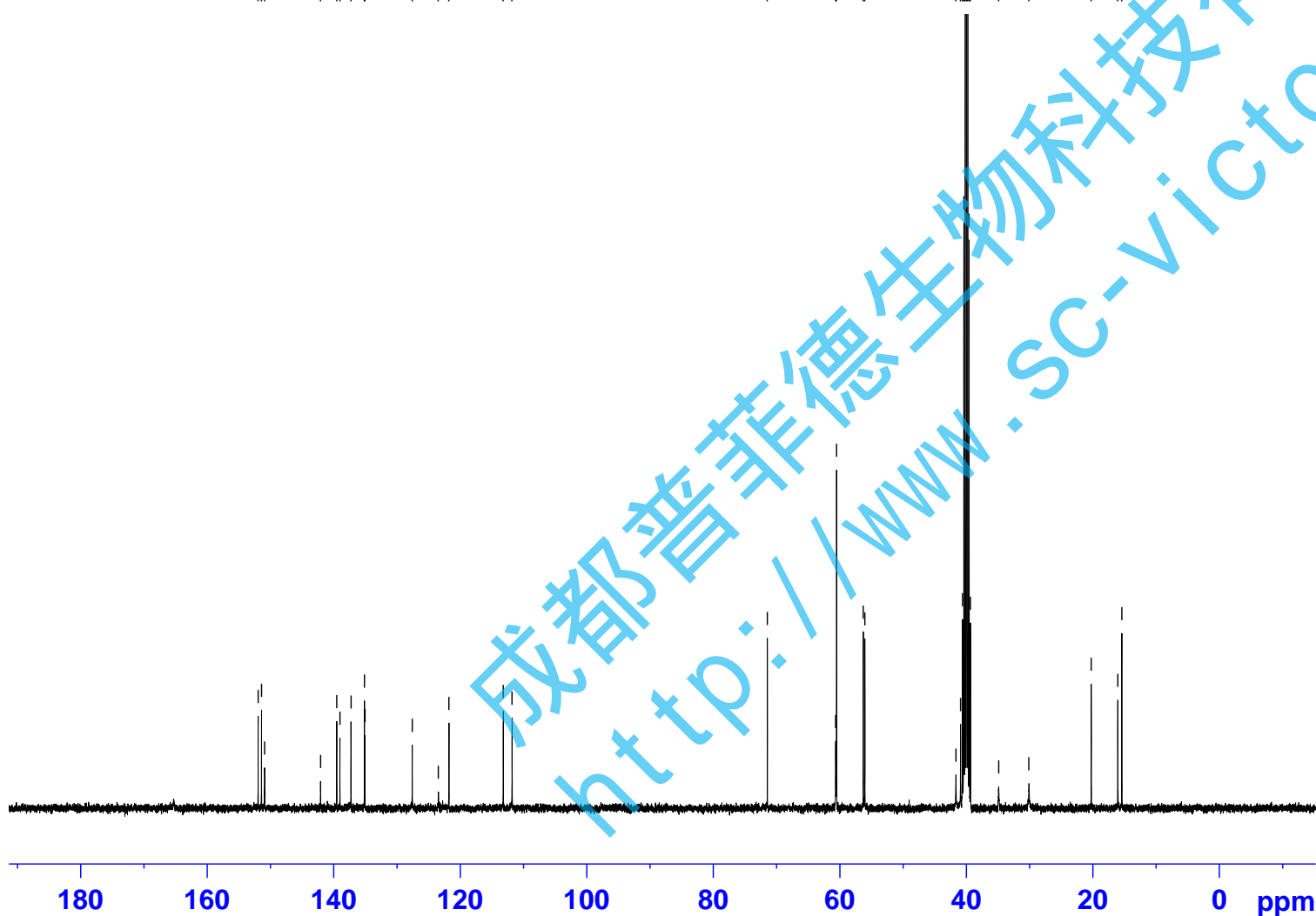
151.96
151.43
150.93
142.10
139.53
139.03
137.28
135.16
135.07
127.60
123.49
121.81
113.22
111.84

71.49
60.68
60.54
56.32
56.07
41.66
40.94
40.63
40.42
40.21
40.00
39.79
39.58
39.37
34.91
30.14
20.29
16.08
15.45

Current Data Parameters
NAME GLP117
EXPNO 11
PROCNO 1

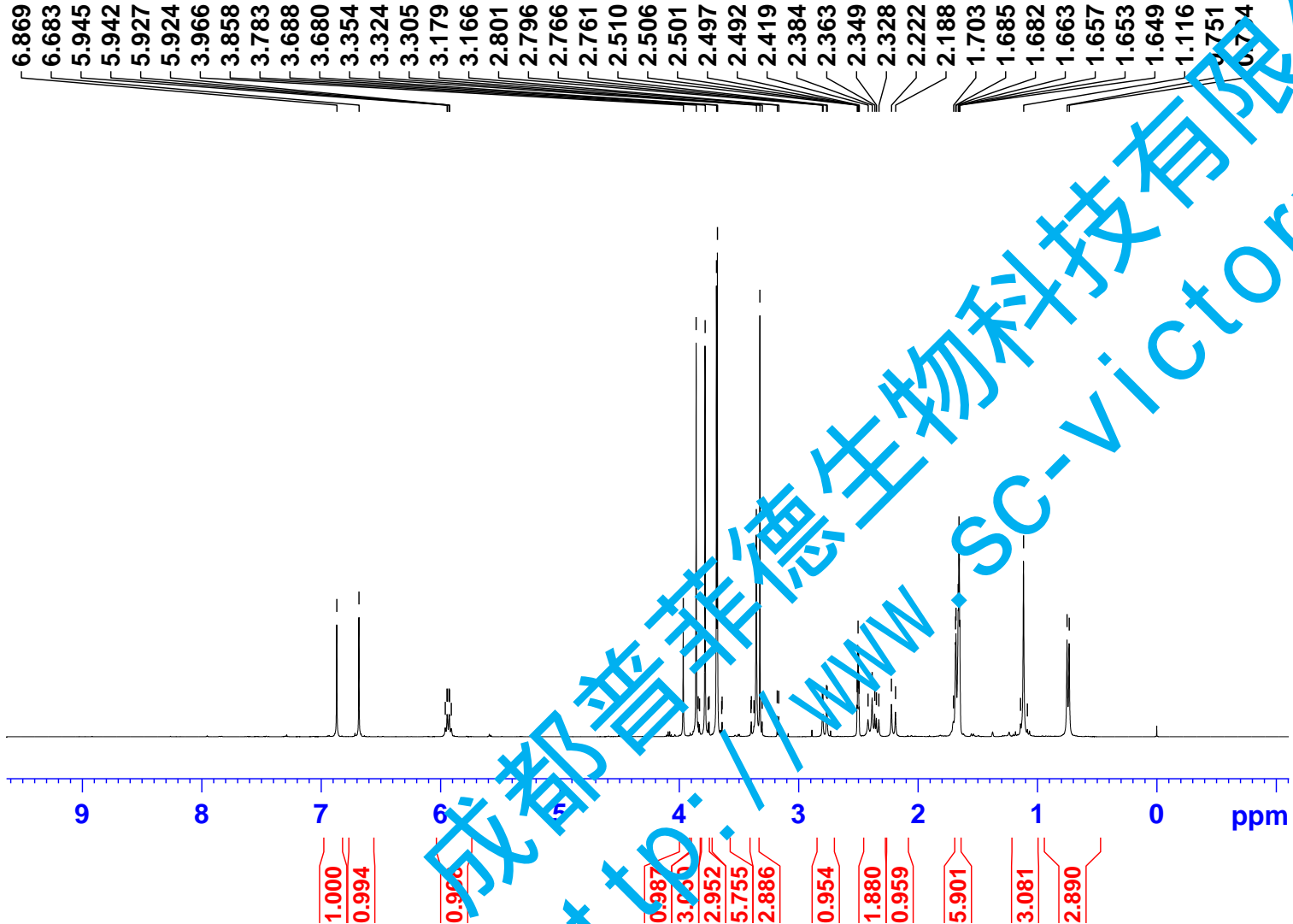
F2 - Acquisition Parameters
Date_ 20210602
Time 9.21 h
INSTRUM spect
PROBHD Z116098_0564 (
PULPROG zgpg30
TD 65536
SOLVENT DMSO
NS 500
DS 4
SWH 24038.461 Hz
FIDRES 0.733596 Hz
AQ 1.3631488 sec
RG 198.68
DW 20.800 usec
DE 6.50 usec
TE 300.0 K
D1 2.0000000 sec
D11 0.0300000 sec
TD0 1
SFO1 100.6228298 MHz
NUC1 13C
P1 10.53 usec
PLW1 69.16899872 W
SFO2 400.1316005 MHz
NUC2 1H
CPDPRG[2] waltz16
PCPD2 90.00 usec
PLW2 14.56099987 W
PLW12 0.19257000 W
PLW13 0.09686100 W

F2 - Processing parameters
SI 32768
SF 100.6127685 MHz
WDW EM
SSB 0
LB 1.00 Hz
GB 0
PC 1.40



GLP117

BRUKER



6.869
6.683
5.945
5.942
5.927
5.924
3.966
3.858
3.783
3.688
3.680
3.354
3.324
3.305
3.179
3.166
2.801
2.796
2.766
2.761
2.510
2.506
2.501
2.497
2.492
2.419
2.384
2.363
2.349
2.328
2.222
2.188
1.703
1.685
1.682
1.663
1.657
1.653
1.649
1.116
0.751
0.744

Current Data Parameters
NAME GLP117
EXPNO 10
PROCNO 1

F2 - Acquisition Parameters
Date_ 20210602
Time 8.51 h
INSTRUM spect
PROBHD Z116098_0564 ()
PULPROG zg30
TD 65536
SOLVENT DMSO
NS 16
DS 2
SWH 8012.820 Hz
FIDRES 0.244532 Hz
AQ 4.0894465 sec
RG 32.03
DW 62.400 usec
DE 6.50 usec
TE 300.0 K
D1 1.00000000 sec
TD0 1
SFO1 400.1324708 MHz
NUC1 1H
P1 10.35 usec
PLW1 14.56099987 W

F2 - Processing parameters
SI 65536
SF 400.1300031 MHz
WDW EM
SSB 0
LB 0.30 Hz
GB 0
PC 1.00