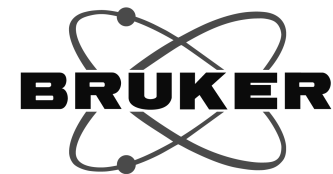


— 9.554

7.484
7.351
7.329
6.809
6.792
6.788
6.607
5.486
5.479
5.454
5.447
5.252
5.249
5.237
5.233
5.230
5.218
5.215
3.841
3.199
3.181
3.170
3.138
3.128
3.096
2.675
2.668
2.633
2.626
1.711
1.660



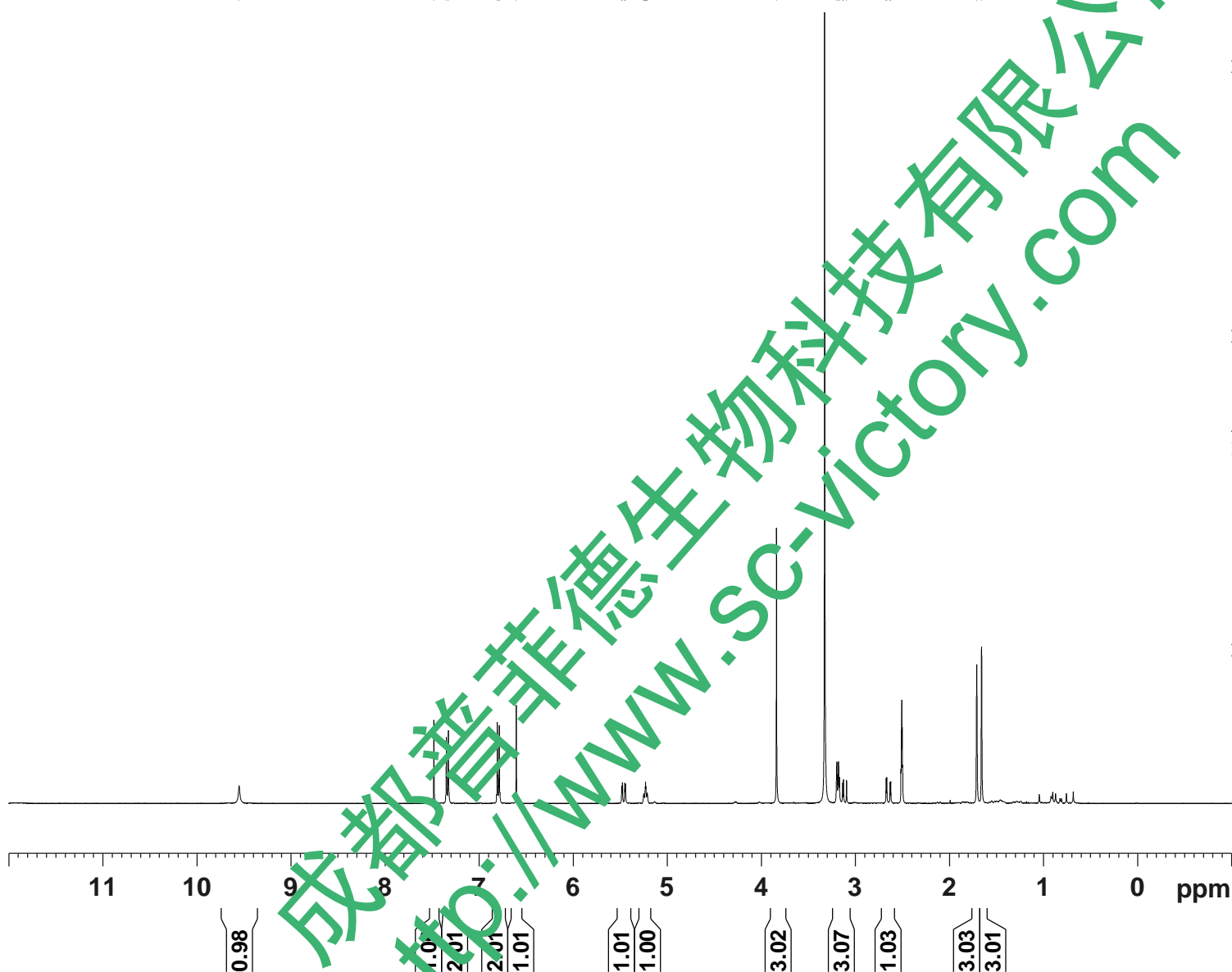
Current Data Parameters
 NAME BuGuZhi 1#-1H NMR DMSO
 EXPNO 1
 PROCNO 1

F2 - Acquisition Parameters

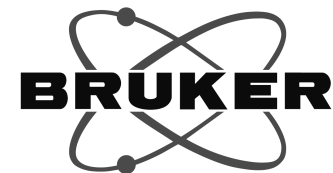
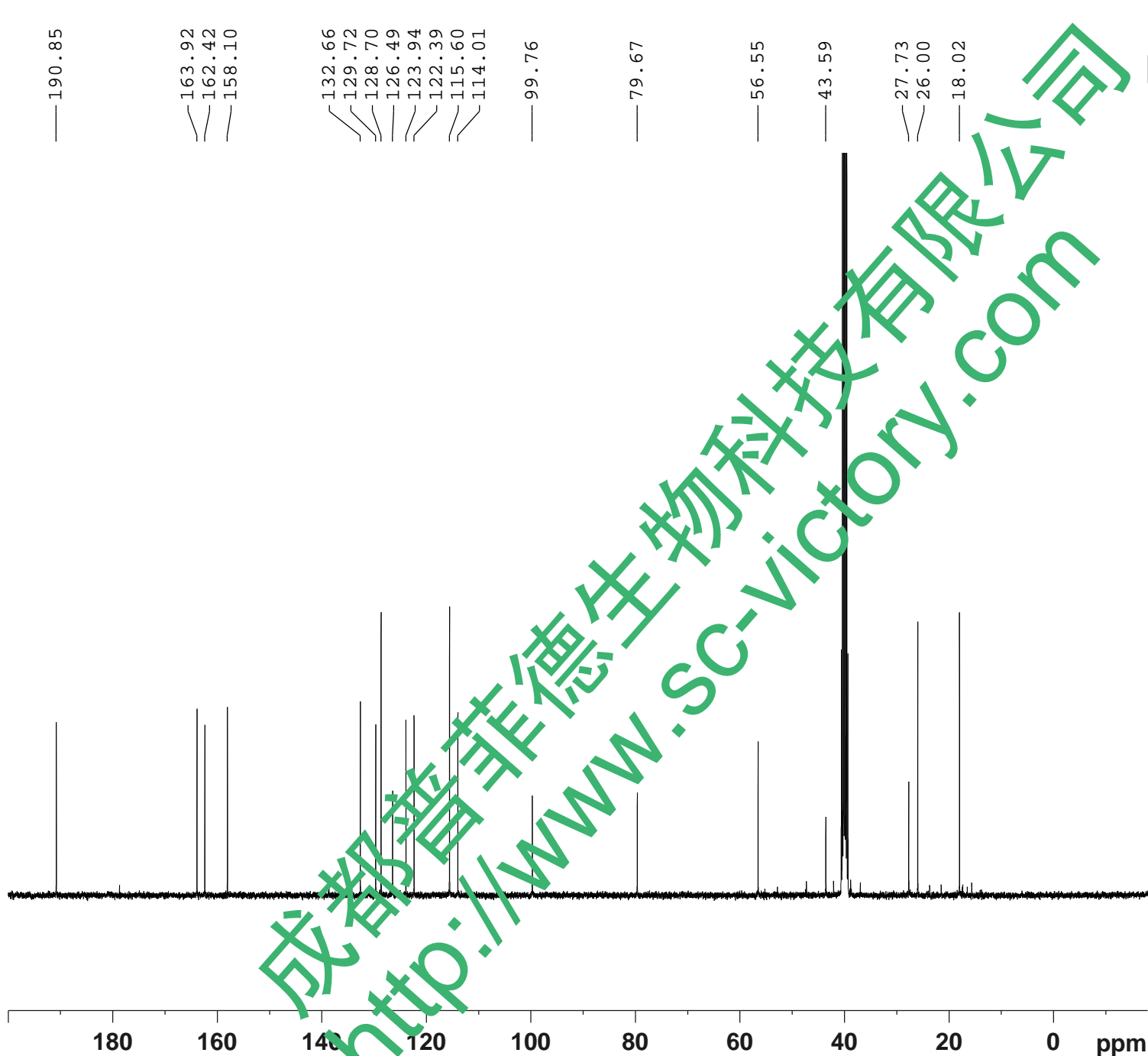
INSTRUM spect
 PROBHD 5 mm PABBO BB/
 PULPROG zg30
 TD 65536
 SOLVENT DMSO
 NS 64
 DS 2
 SWH 8012.820 Hz
 FIDRES 0.122266 Hz
 AQ 4.0894465 sec
 RG 116.95
 DW 62.400 usec
 DE 6.50 usec
 TE 301.2 K
 D1 2.00000000 sec
 TD0 1

==== CHANNEL f1 =====
 SFO1 400.1324710 MHz
 NUC1 1H
 P1 14.79 usec
 PLW1 11.50800037 W

F2 - Processing parameters
 SI 262144
 SF 400.1300000 MHz
 WDW no
 SSB 0
 LB 0 Hz
 GB 0
 PC 1.00



成都普菲德生物科技有限公司
<http://www.sc-victory.com>



Current Data Parameters
 NAME BuGuZhi 1#-13C NMR DMSO
 EXPNO 1
 PROCNO 1

F2 - Acquisition Parameters

INSTRUM spect
 PROBHD 5 mm PABBO BB/
 PULPROG zgig30
 TD 65536
 SOLVENT DMSO
 NS 2048
 DS 4
 SWH 24038.461 Hz
 FIDRES 0.366798 Hz
 AQ 1.3631488 sec
 RG 202.5
 DW 20.800 usec
 DE 6.50 usec
 TE 301.1 K
 D1 2.0000000 sec
 D11 0.0300000 sec
 TD0 1

==== CHANNEL f1 =====
 SFO1 100.6228298 MHz
 NUC1 13C
 P1 10.13 usec
 PLW1 51.0000000 W

==== CHANNEL f2 =====
 SFO2 400.1316005 MHz
 NUC2 1H
 CPDPRG[2] waltz16
 PCPD2 90.00 usec
 PLW2 11.50800037 W
 PLW12 0.31077999 W

F2 - Processing parameters
 SI 262144
 SF 100.6127690 MHz
 WDW EM
 SSB 0
 LB 1.00 Hz
 GB 0
 PC 1.40