

10.746

9.413  
8.236  
8.227  
7.973  
7.951  
7.235  
7.197  
7.192  
7.177  
7.172  
6.945  
6.939  
6.923  
6.917  
6.856  
6.851  
6.829  
6.808  
5.323  
5.305  
5.287

3.256  
3.238

1.685



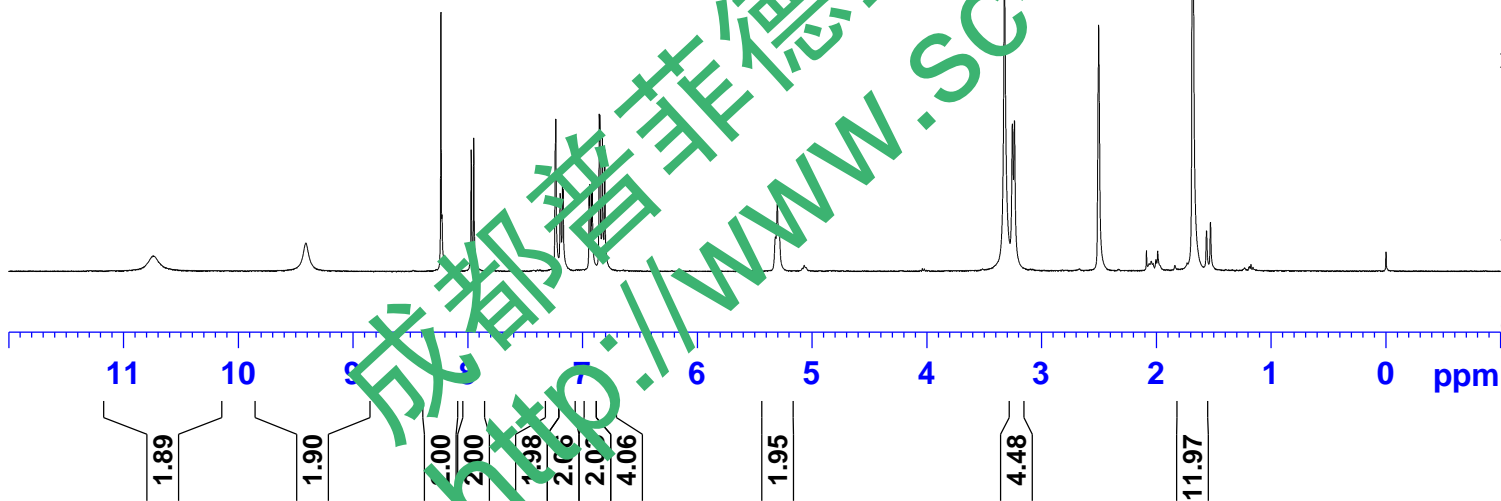
Current Data Parameters  
NAME BuGuZhiNing-1H NMR DMSO  
EXPNO 1  
PROCNO 1

F2 - Acquisition Parameters

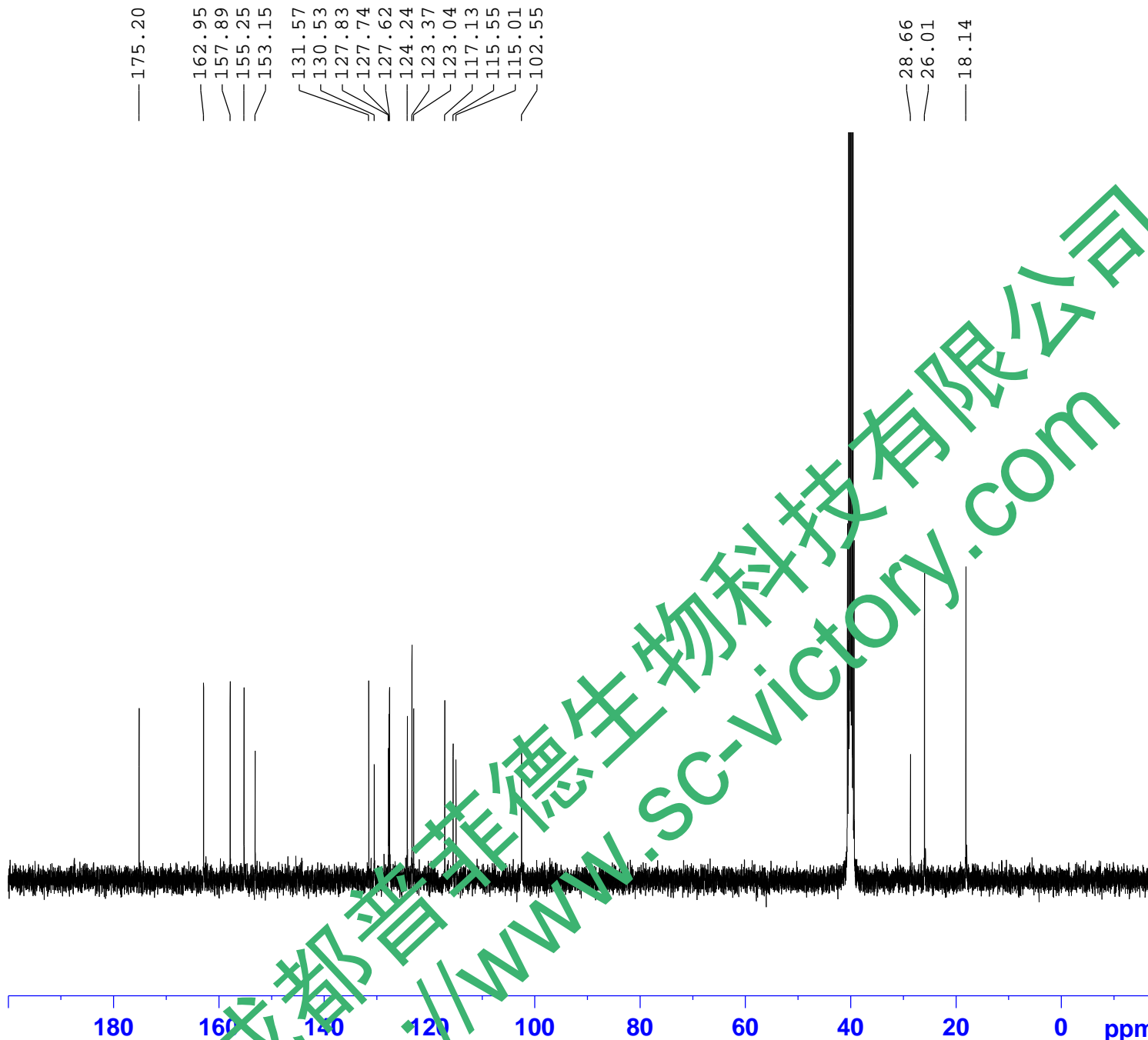
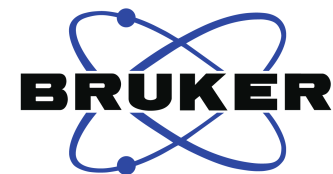
INSTRUM spect  
PROBHD 5 mm PABBO BB/  
PULPROG zg30  
TD 65536  
SOLVENT DMSO  
NS 16  
DS 2  
SWH 8012.820 Hz  
FIDRES 0.122266 Hz  
AQ 4.0894465 sec  
RG 116.95  
DW 62.400 usec  
DE 6.50 usec  
TE 301.1 K  
D1 2.00000000 sec  
TD0 1

===== CHANNEL f1 =====  
SFO1 400.1324710 MHz  
NUC1 1H  
P1 14.79 usec  
PLW1 11.50800037 W

F2 - Processing parameters  
SI 262144  
SF 400.1300016 MHz  
WDW EM  
SSB 0  
LB 0.30 Hz  
GB 0  
PC 1.00  
SR 1.56 Hz



成都普菲德生物科技有限公司  
http://www.sc-victory.com



175.20  
162.95  
157.89  
155.25  
153.15  
131.57  
130.53  
127.83  
127.74  
127.62  
124.24  
123.37  
123.04  
117.13  
115.55  
115.01  
102.55

28.66  
26.01  
18.14

Current Data Parameters  
NAME BuGuZhiNing-13C NMR DMSO  
EXPNO 1  
PROCNO 1

F2 - Acquisition Parameters

INSTRUM spect  
PROBHD 5 mm PABBO BB/  
PULPROG zgig30  
TD 65536  
SOLVENT DMSO  
NS 358  
DS 4  
SWH 24038.461 Hz  
FIDRES 0.366798 Hz  
AQ 1.3631488 sec  
RG 202.5  
DW 20.800 usec  
DE 6.50 usec  
TE 301.1 K  
D1 2.00000000 sec  
D11 0.03000000 sec  
TD0 1

==== CHANNEL f1 =====  
SFO1 100.6228298 MHz  
NUC1 13C  
P1 10.13 usec  
PLW1 51.00000000 W

==== CHANNEL f2 =====  
SFO2 400.1316005 MHz  
NUC2 1H  
CPDPRG[2] waltz16  
PCPD2 90.00 usec  
PLW2 11.50800037 W  
PLW12 0.31077999 W

F2 - Processing parameters  
SI 262144  
SF 100.6127690 MHz  
WDW EM  
SSB 0  
LB 1.00 Hz  
GB 0  
PC 1.40  
SR 0 Hz