

# Display Report

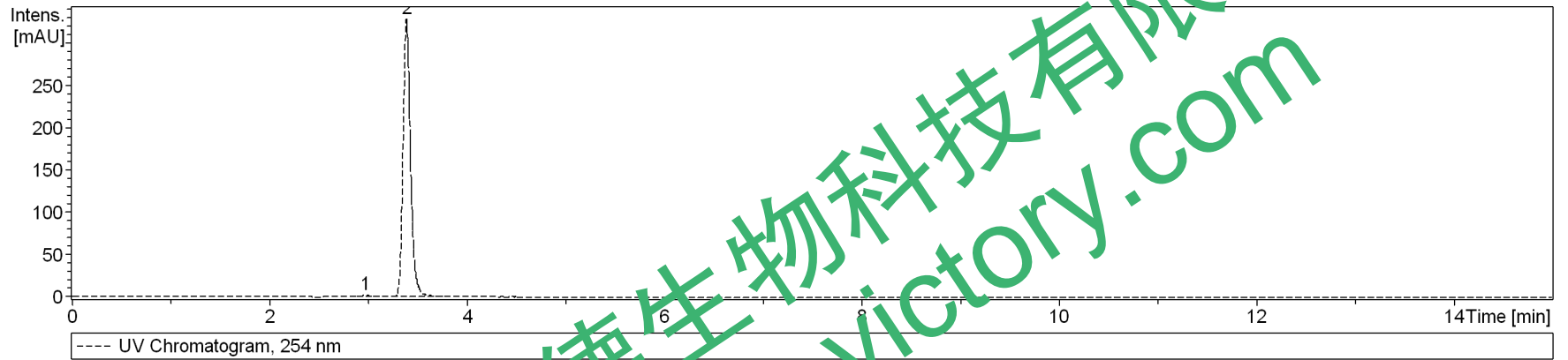
## Analysis Info

Analysis Name D:\Data\test\0519\gancaozaertong\_99\_01\_1372.d  
Method 1372.m  
Sample Name gancaozaertong  
Comment

Operator  
Instrument bruker  
amaZon SL

## Acquisition Parameter

Ion Source Type	ESI	Ion Polarity	Positive	Alternating Ion Polarity	off
Mass Range Mode	UltraScan	Scan Begin	70 m/z	Scan End	1000 m/z
Capillary Exit	140.0 V	n/a	n/a	Trap Drive	50.6
Accumulation Time	2014 $\mu$ s	Averages	5 Spectra	Auto MS/MS	off



#	RT [min]	Area	Area Frac. %
1	3.0	11.602	0.7
2	3.4	1729.721	99.3

# Display Report

## Analysis Info

Analysis Name D:\Data\test\0519\gancaozaertong\_99\_01\_1372.d  
Method 1372.m  
Sample Name gancaozaertong  
Comment

Operator  
Instrument bruker  
amaZon SL

## Acquisition Parameter

Ion Source Type	ESI	Ion Polarity	Positive	Alternating Ion Polarity	on
Mass Range Mode	UltraScan	Scan Begin	70 m/z	Scan End	1000 m/z
Capillary Exit	140.0 V	n/a	n/a	Trap Drive	50.6
Accumulation Time	2014 $\mu$ s	Averages	5 Spectra	Auto MS/MS	off

