

Display Report

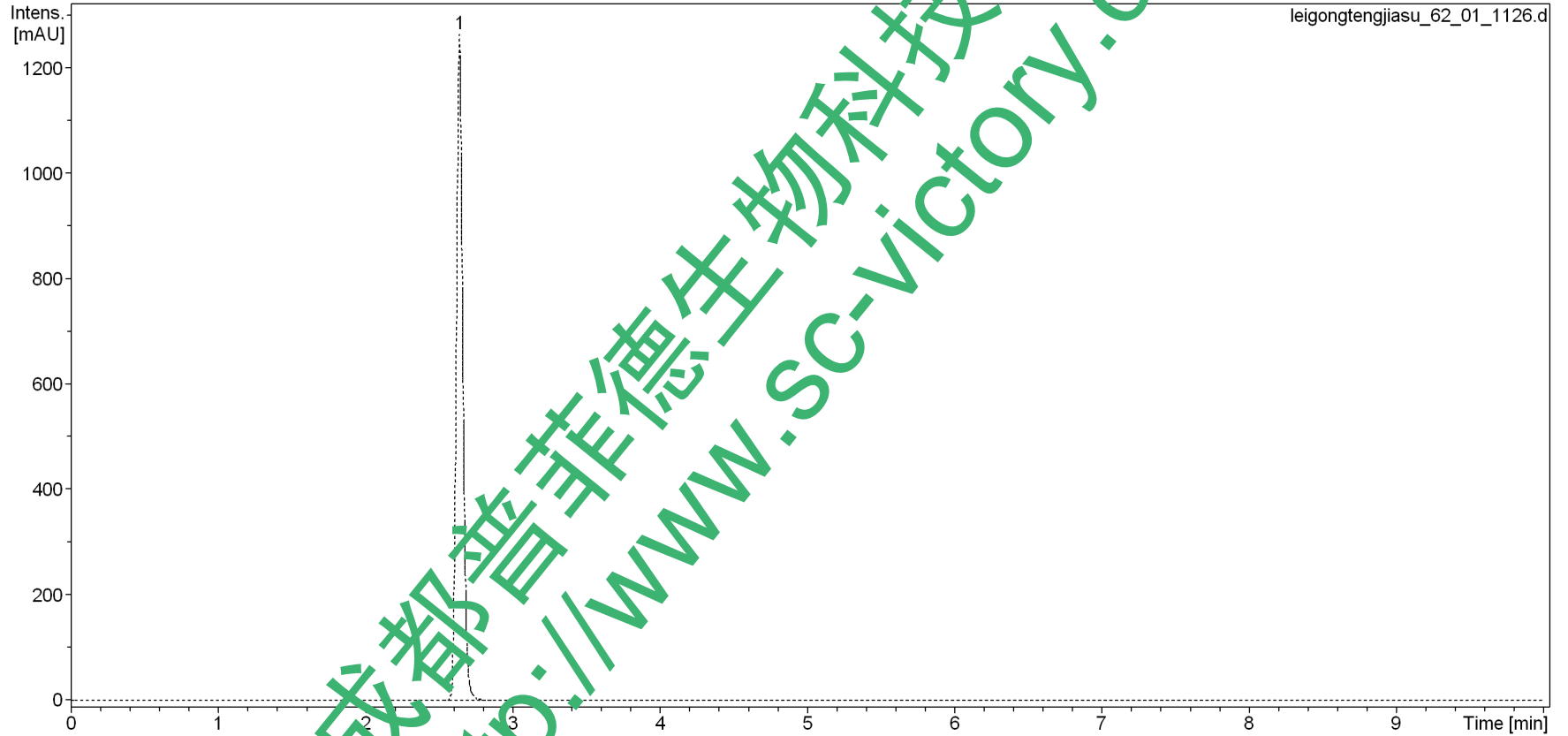
Analysis Info

Analysis Name D:\Data\test\0424\leigongtengjiasu_62_01_1126.d
Method 1126.m
Sample Name leigongtengjiasu
Comment Agilent ZORBAX SB-C18 5um 4.6*250mm
ACN: Water=90:10

Operator bruker
Instrument amaZon SL

Acquisition Parameter

Ion Source Type	ESI	Ion Polarity	Negative	Alternating Ion Polarity	on
Mass Range Mode	UltraScan	Scan Begin	70 m/z	Scan End	1000 m/z
Capillary Exit	-140.0 V	n/a	n/a	Trap Drive	50.6
Accumulation Time	34393 μ s	Averages	5 Spectra	Auto MS/MS	off



Display Report

#	RT [min]	Area	Area Frac. %
1	2.6	3860.9	100.0

Display Report

Analysis Info

Analysis Name D:\Data\test\0424\leigongtengjiasu_62_01_1126.d
Method 1126.m
Sample Name leigongtengjiasu
Comment Agilent ZORBAX SB-C18 5um 4.6*250mm
ACN: Water=90:10

Operator bruker
Instrument amaZon SL

Acquisition Parameter

Ion Source Type	ESI	Ion Polarity	Negative	Alternating Ion Polarity	on
Mass Range Mode	UltraScan	Scan Begin	70 m/z	Scan End	1000 m/z
Capillary Exit	-140.0 V	n/a	n/a	Trap Drive	50.6
Accumulation Time	34393 μ s	Averages	5 Spectra	Auto MS/MS	off

