



Current Data Parameters  
NAME mangbinghuasu  
EXPNO 2  
PROCNO 1

F2 - Acquisition Parameters  
Date\_ 20150603  
Time 12.54  
INSTRUM spect  
PROBHD 5 mm PABBO BB-  
PULPROG zgpg30  
TD 65536  
SOLVENT DMSO  
NS 694  
DS 4  
SWH 24038.461 Hz  
FIDRES 0.366798 Hz  
AQ 1.3631988 sec  
RG 194.85  
AQ 20.800 usec  
DE 6.50 usec  
TE 302.9 K  
D1 2.0000000 sec  
D11 0.0300000 sec  
TD0 1

==== CHANNEL f1 =====  
NUC1 13C  
P1 9.24 usec  
PLW1 95.0000000 W  
SFO1 100.6228293 MHz

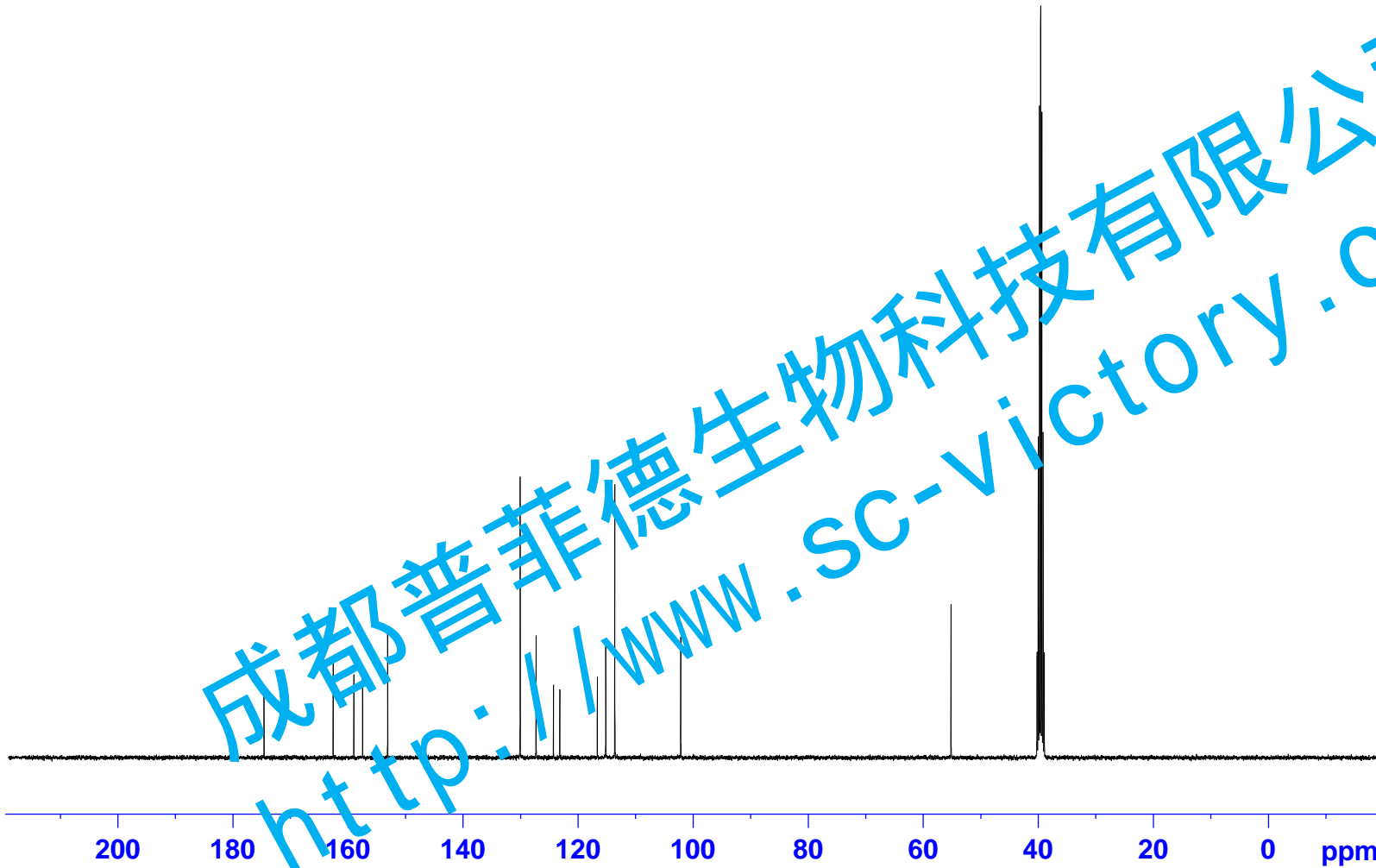
==== CHANNEL f2 =====  
CPDPRG2 waltz16  
NUC2 1H  
PCPD2 80.00 usec  
PLW2 19.0000000 W  
PLW12 0.2529200 W  
PLW13 0.1618700 W  
SFO2 400.1316005 MHz

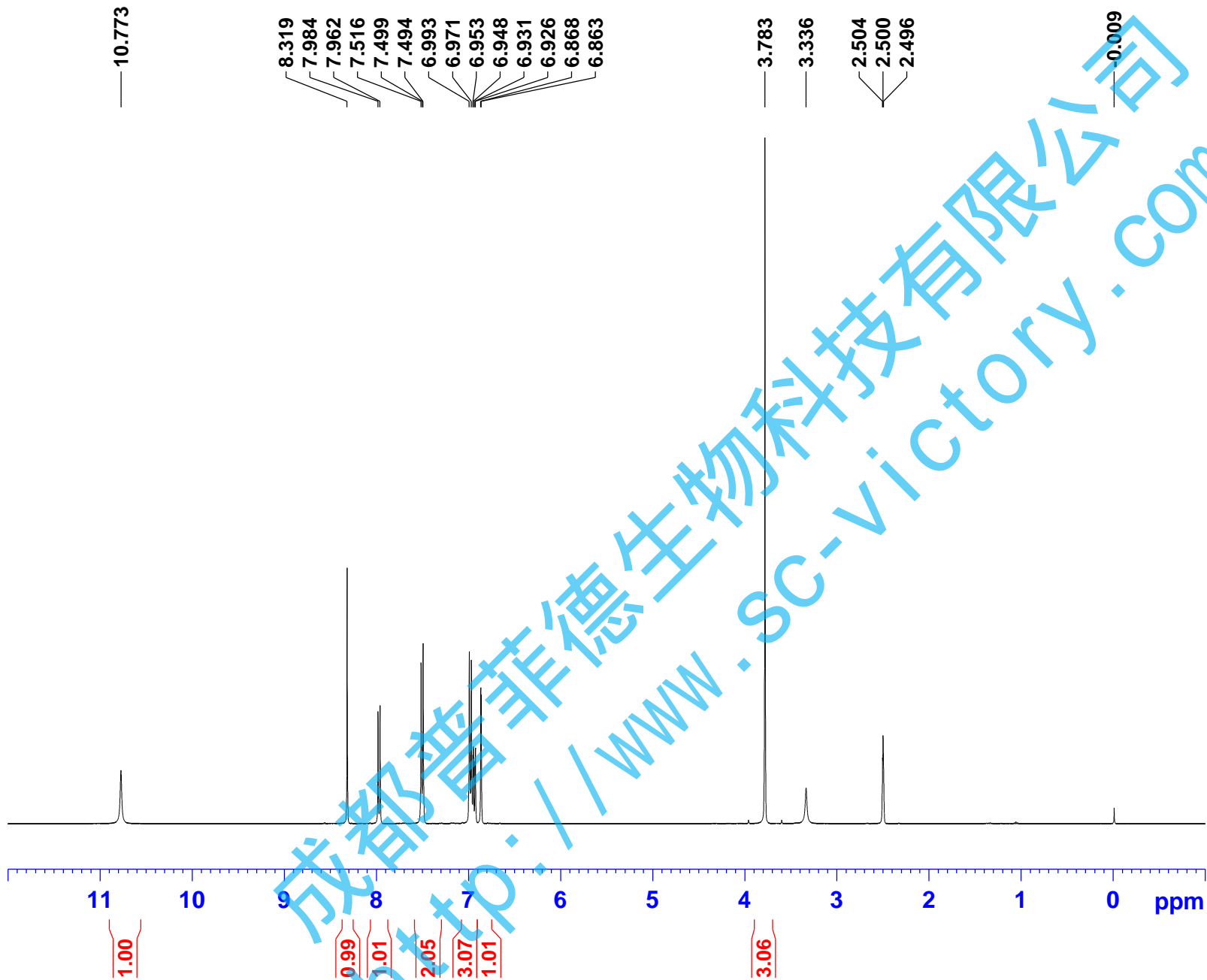
F2 - Processing parameters  
SI 32768  
SF 100.6128190 MHz  
WDW EM  
SSB 0  
LB 1.00 Hz  
GB 0  
PC 1.40

174.569  
162.536  
158.934  
157.418  
153.066

130.031  
127.257  
124.227  
123.140  
116.608  
115.139  
113.567  
102.095

55.107  
40.148  
39.939  
39.730  
39.521  
39.313  
39.104  
38.895





Current Data Parameters  
 NAME mangbinghuasu  
 EXPNO 1  
 PROCNO 1

F2 - Acquisition Parameters

INSTRUM spect  
 PROBHD 5 mm PABBO BB-  
 PULPROG zg30  
 TD 65536  
 SOLVENT DMSO  
 NS 16  
 DS 2  
 SWH 8223.685 Hz  
 FIDRES 0.125483 Hz  
 AQ 3.9846387 sec  
 RG 78.31  
 DW 60.800 usec  
 DE 6.50 usec  
 TE 302.2 K  
 D1 1.0000000 sec  
 TD0 1

==== CHANNEL f1 =====  
 NUC1 1H  
 P1 9.23 usec  
 PLW1 20.0000000 W  
 SFO1 400.1324710 MHz

F2 - Processing parameters  
 SI 65536  
 SF 400.1300039 MHz  
 WDW EM  
 SSB 0  
 LB 0.30 Hz  
 GB 0  
 PC 1.00