

Current Data Parameters  
NAME Re  
EXPNO 2  
PROCNO 3

F2 - Acquisition Parameters

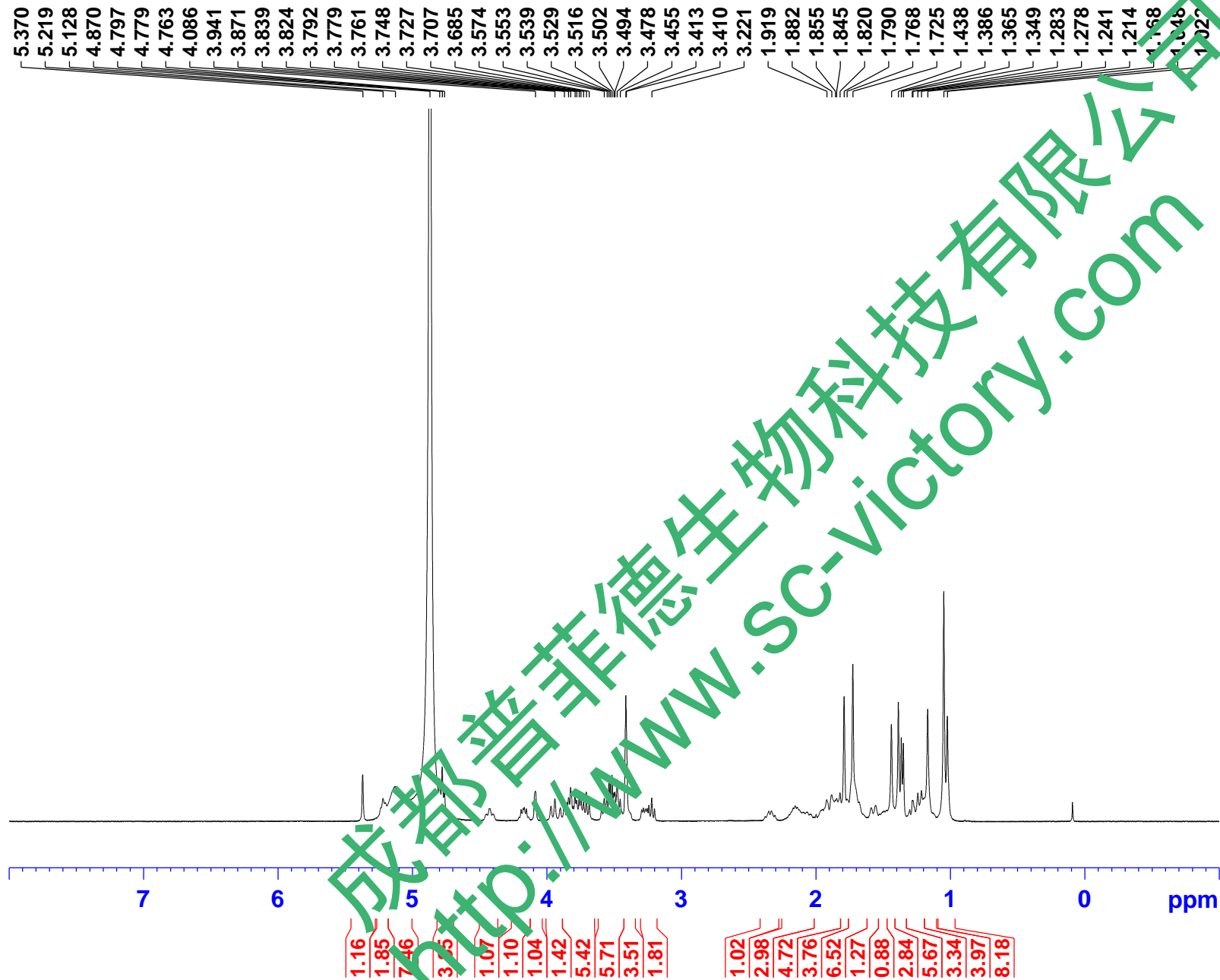
Time 17.56  
INSTRUM spect  
PROBHD 5 mm PABBO BB-  
PULPROG zgpg30  
TD 65536  
SOLVENT MeOD  
NS 16486  
DS 4  
SWH 24038.461 Hz  
FIDRES 0.366798 Hz  
AQ 1.3631988 sec  
RG 194.85  
DW 20.800 usec  
DE 6.50 usec  
TE 300.9 K  
D1 2.0000000 sec  
D11 0.03000000 sec  
TD0 1

==== CHANNEL f1 =====  
NUC1 13C  
P1 9.24 usec  
PLW1 95.00000000 W  
SFO1 100.6228293 MHz

==== CHANNEL f2 =====  
CPDPRG2 waltz16  
NUC2 1H  
PCPD2 80.00 usec  
PLW2 19.00000000 W  
PLW12 0.25292000 W  
PLW13 0.16187000 W  
SFO2 400.1316005 MHz

F2 - Processing parameters  
SI 32768  
SF 100.6126670 MHz  
WDW EM  
SSB 0  
LB 1.00 Hz  
GB 0  
PC 1.40

成都普菲德生物科技有限公司  
<http://www.sc-victory.com>



Current Data Parameters  
NAME Re  
EXPNO 1  
PROCNO 1

F2 - Acquisition Parameters

INSTRUM spect  
PROBHD 5 mm PABBO BB-  
PULPROG zg30  
TD 65536  
SOLVENT MeOD  
NS 16  
DS 2  
SWH 8223.685 Hz  
FIDRES 0.125483 Hz  
AQ 3.9846387 sec  
RG 71.56  
DW 60.800 usec  
DE 6.50 usec  
TE 300.0 K  
D1 1.0000000 sec  
TD0 1

==== CHANNEL f1 =====  
NUC1 1H  
P1 9.23 usec  
PLW1 20.0000000 W  
SFO1 400.1324710 MHz

F2 - Processing parameters  
SI 65536  
SF 400.1293632 MHz  
WDW EM  
SSB 0  
LB 0.30 Hz  
GB 0  
PC 1.00

成都普菲德生物科技有限公司  
http://www.sc-victory.com

5.370  
5.219  
5.128  
4.870  
4.797  
4.779  
4.763  
4.086  
3.941  
3.871  
3.839  
3.824  
3.792  
3.779  
3.761  
3.748  
3.727  
3.707  
3.685  
3.574  
3.553  
3.539  
3.529  
3.516  
3.502  
3.494  
3.478  
3.455  
3.413  
3.410  
3.221

1.919  
1.882  
1.855  
1.845  
1.820  
1.790  
1.768  
1.725  
1.438  
1.386  
1.365  
1.349  
1.283  
1.278  
1.241  
1.214  
1.168  
1.048  
1.022

1.16  
1.85  
7.46  
3.55  
1.07  
1.10  
1.04  
1.42  
5.42  
5.71  
3.51  
1.81

1.02  
2.98  
4.72  
3.76  
6.52  
1.27  
0.88  
2.84  
5.67  
3.34  
3.97  
8.18