



Current Data Parameters  
NAME Rg3  
EXPNO 2  
PROCNO 1

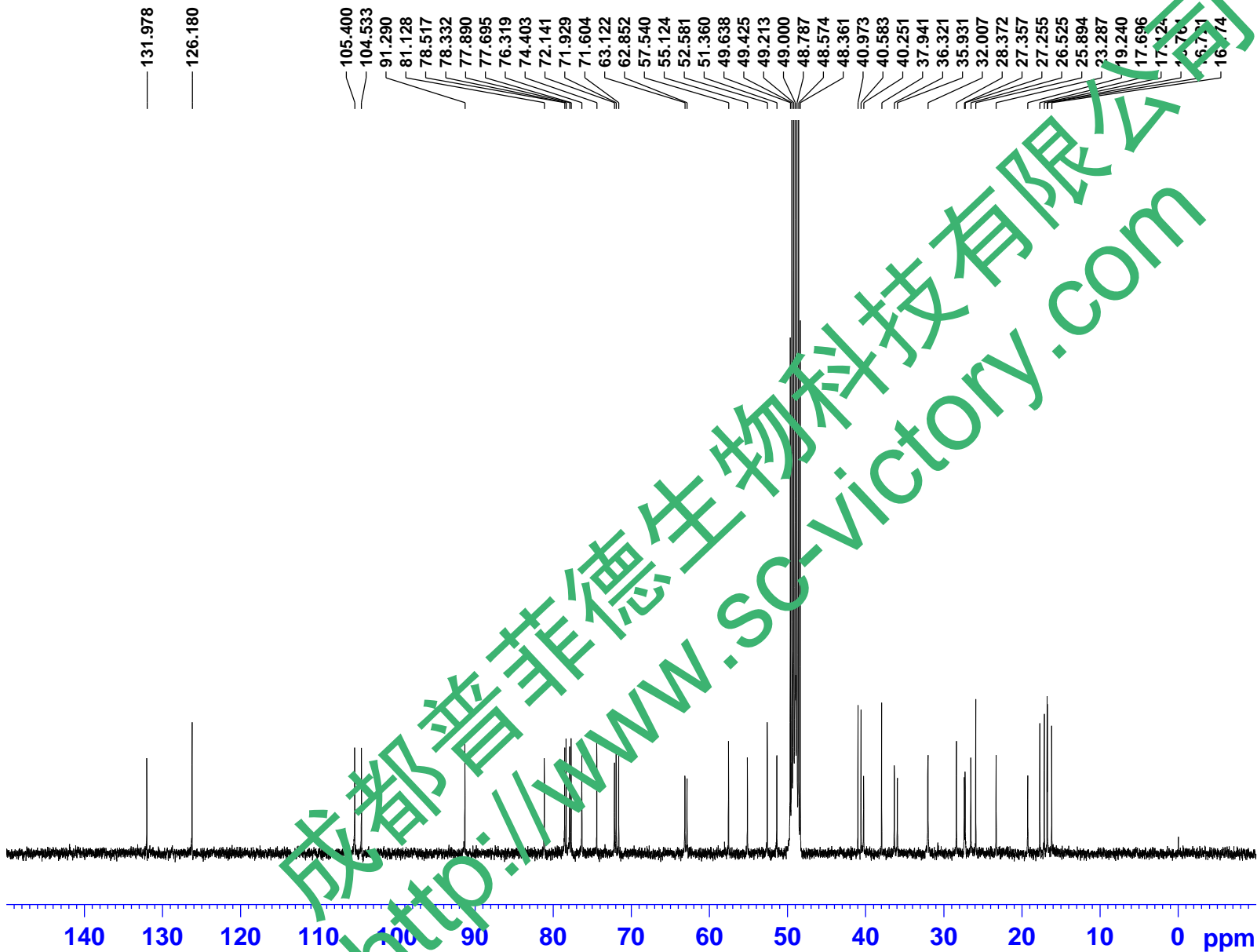
F2 - Acquisition Parameters

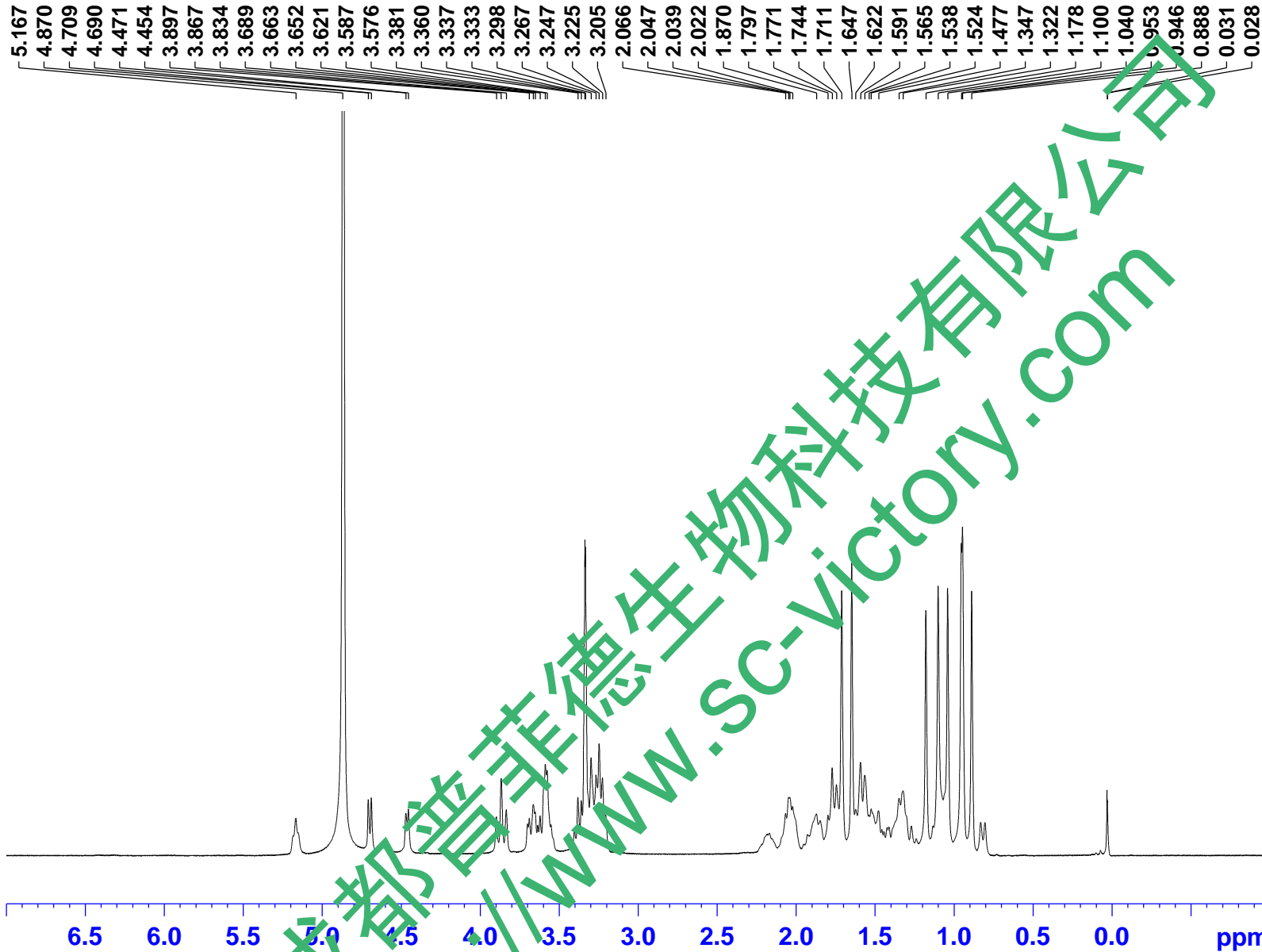
Time 9.06  
INSTRUM spect  
PROBHD 5 mm PABBO BB-  
PULPROG zgpg30  
TD 65536  
SOLVENT MeOD  
NS 5955  
DS 4  
SWH 24038.461 Hz  
FIDRES 0.366798 Hz  
AQ 1.3631988 sec  
RG 194.85  
DW 20.800 usec  
DE 6.50 usec  
TE 299.6 K  
D1 2.0000000 sec  
D11 0.03000000 sec  
TD0 1

==== CHANNEL f1 =====  
NUC1 13C  
P1 9.24 usec  
PLW1 95.00000000 W  
SFO1 100.6228293 MHz

==== CHANNEL f2 =====  
CPDPRG2 waltz16  
NUC2 1H  
PCPD2 80.00 usec  
PLW2 19.00000000 W  
PLW12 0.25292000 W  
PLW13 0.16187000 W  
SFO2 400.1316005 MHz

F2 - Processing parameters  
SI 32768  
SF 100.6126279 MHz  
WDW EM  
SSB 0  
LB 1.00 Hz  
GB 0  
PC 1.40





Current Data Parameters  
NAME Rg3  
EXPNO 1  
PROCNO 1

F2 - Acquisition Parameters

Time 3.25  
INSTRUM spect  
PROBHD 5 mm PABBO BB-  
PULPROG zg30  
TD 65536  
SOLVENT MeOD  
NS 16  
DS 2  
SWH 8223.685 Hz  
FIDRES 0.125483 Hz  
AQ 3.9846387 sec  
RG 71.56  
DW 60.800 usec  
DE 6.50 usec  
TE 299.5 K  
D1 1.0000000 sec  
TD0 1

==== CHANNEL f1 =====  
NUC1 1H  
P1 9.23 usec  
PLW1 20.0000000 W  
SFO1 400.1324710 MHz

F2 - Processing parameters  
SI 65536  
SF 400.1299979 MHz  
WDW EM  
SSB 0  
LB 0.30 Hz  
GB 0  
PC 1.00

成都普菲德生物科技有限公司  
http://www.sc-victory.com

1.00  
1.19  
0.68  
1.14  
2.12  
5.23  
11.16  
1.31  
3.17  
2.48  
6.20  
9.01  
5.21  
2.98  
8.25  
8.69  
0.95