

# Display Report

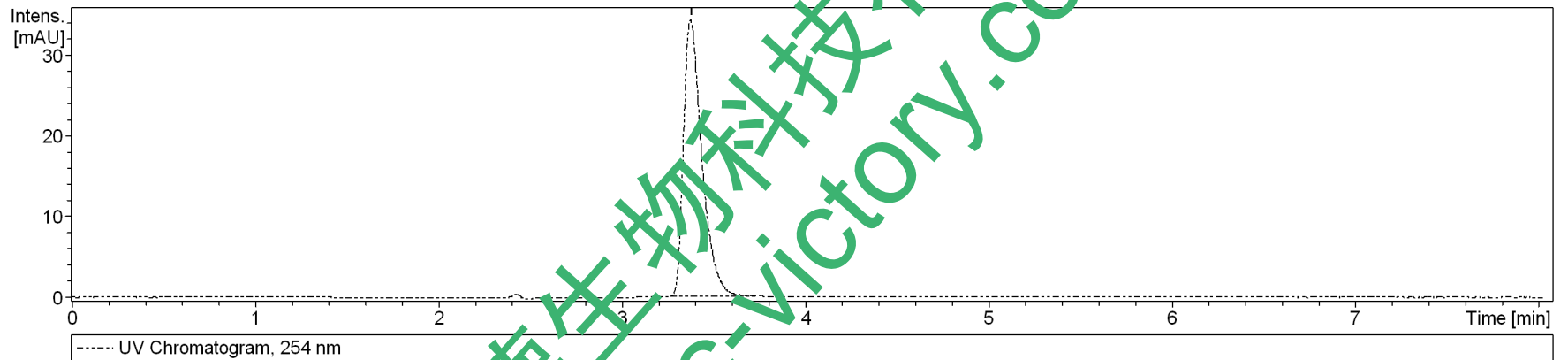
## Analysis Info

Analysis Name D:\Data\test\1103\xiaobojian\_16\_01\_211.d  
Method 211.m  
Sample Name xiaobojian  
Comment

Operator  
Instrument. bruker  
amaZon SL

## Acquisition Parameter

Ion Source Type	ESI	Ion Polarity	Negative	Alternating Ion Polarity	on
Mass Range Mode	UltraScan	Scan Begin	70 m/z	Scan End	1000 m/z
Capillary Exit	-140.0 V	n/a	n/a	Trap Drive	50.6
Accumulation Time	32152 $\mu$ s	Averages	5 Spectra	Auto MS/MS	off



#	RT [min]	Area	Area Frac. %
1	3.4	239.82	100.0

# Display Report

## Analysis Info

Analysis Name D:\Data\test\1103\xiaobojian\_16\_01\_211.d  
Method 211.m  
Sample Name xiaobojian  
Comment

Operator Bruker  
Instrument amaZon SL

## Acquisition Parameter

Ion Source Type	ESI	Ion Polarity	Negative	Alternating Ion Polarity	on
Mass Range Mode	UltraScan	Scan Begin	70 m/z	Scan End	1000 m/z
Capillary Exit	-140.0 V	n/a	n/a	Trap Drive	50.6
Accumulation Time	32152 $\mu$ s	Averages	5 Spectra	Attopuls/MS	off

