

—12.066

—8.240

7.137
7.127

—6.361

—5.286

—3.909
—3.571

1.823
1.668



Current Data Parameters

NAME YinYangHuoSu-1H NMR Acetone-d6
EXPNO 2
PROCNO 1

F2 - Acquisition Parameters

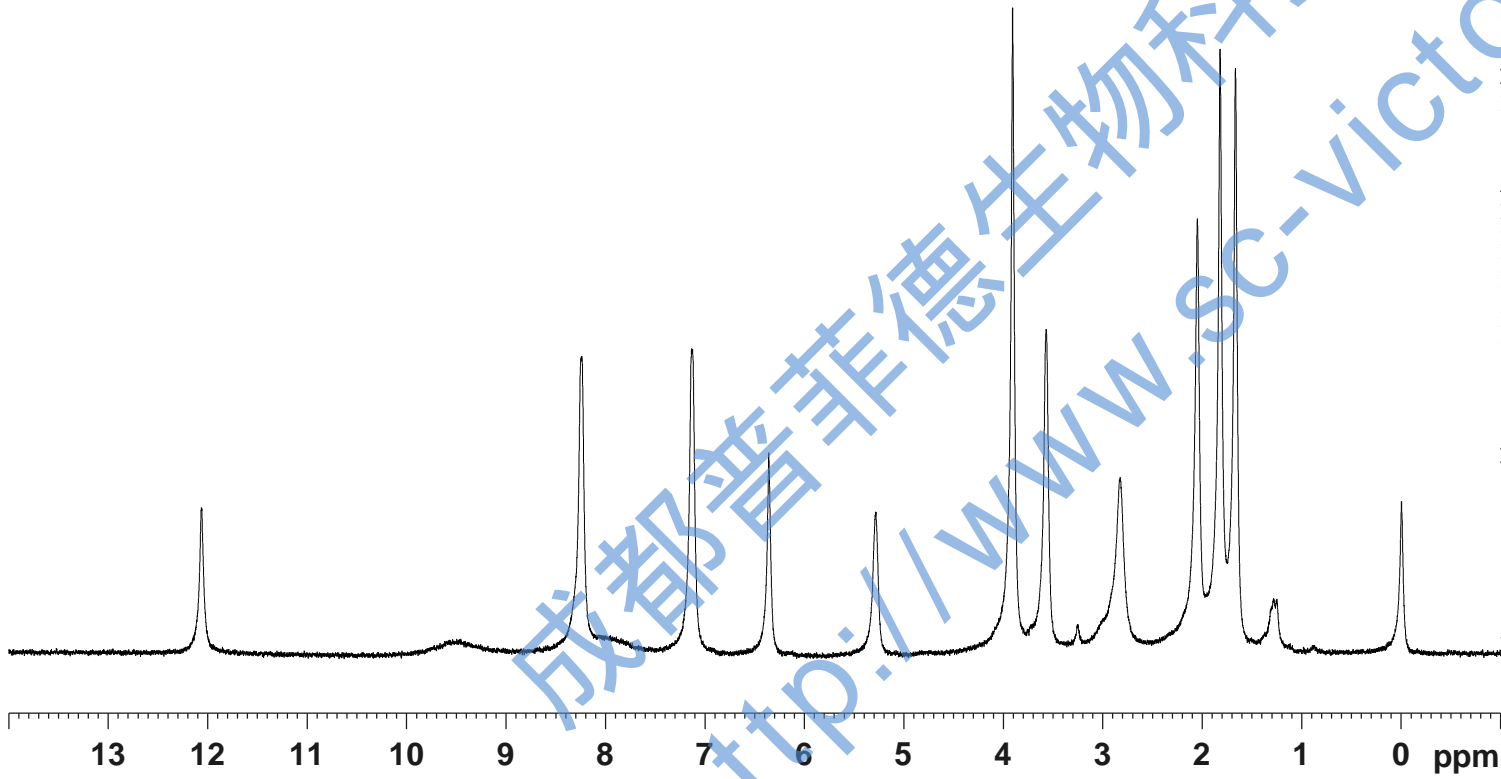
INSTRUM spect
PROBHD 5 mm PABBO BB/
PULPROG zg30
TD 65536
SOLVENT Acetone
NS 14
DS 2
SWH 8012.820 Hz
FIDRES 0.122266 Hz
AQ 4.0894465 sec
RG 124.64
DW 62.400 usec
DE 6.50 usec
TE 301.1 K
D1 1.0000000 sec
TD0 1

==== CHANNEL f1 =====

SFO1 400.1324710 MHz
NUC1 1H
P1 15.36 usec
PLW1 11.50800037 W

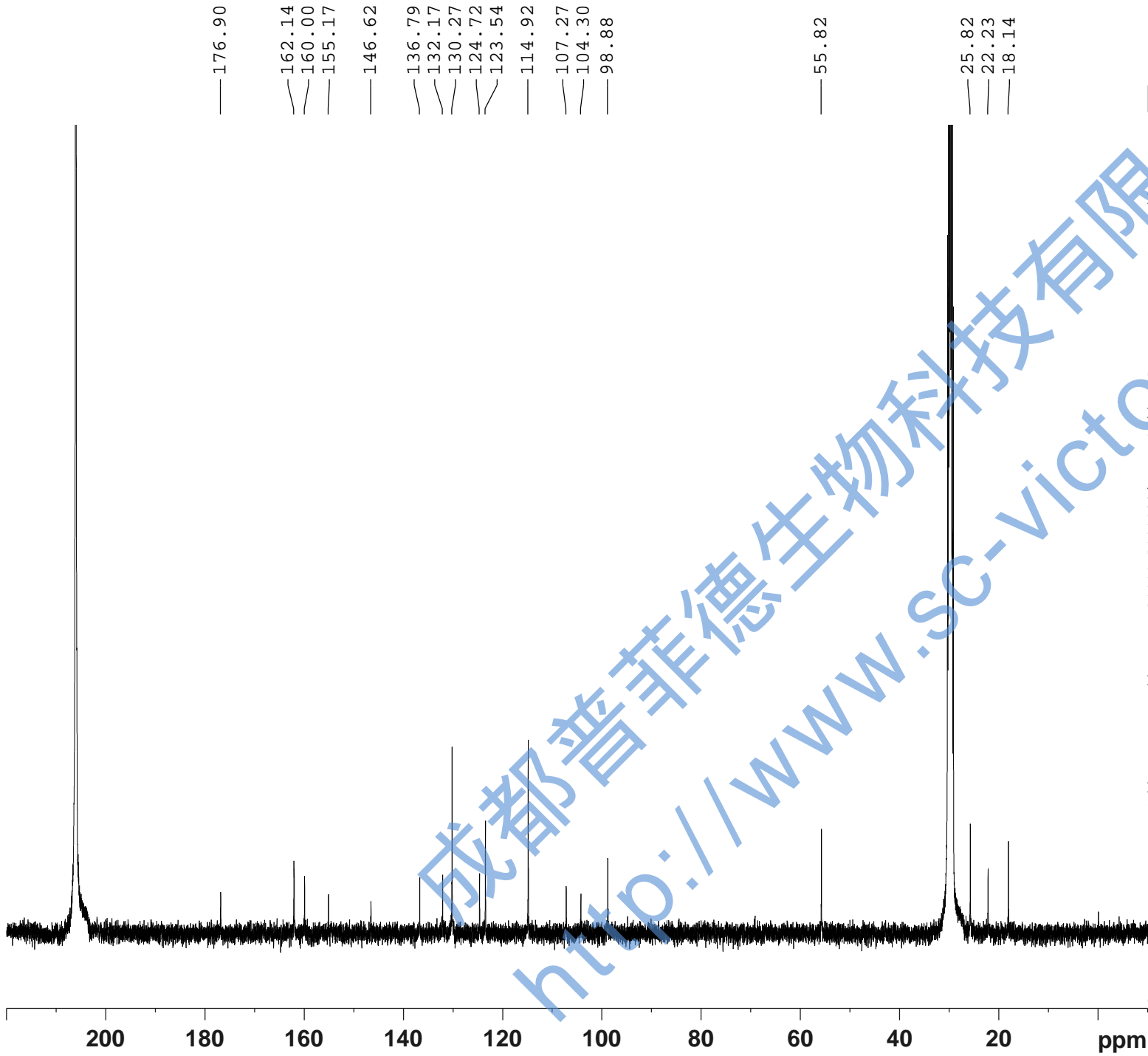
F2 - Processing parameters

SI 65536
SF 400.1300095 MHz
WDW EM
SSB 0
LB 0.30 Hz
GB 0
PC 1.00
SINO 0



0.80 0.34 2.59 2.00 0.84 0.74 3.35 2.13 6.04

成都普菲德生物科技有限公司
www.sc-victor.com



— 176.90
 — 162.14
 — 160.00
 — 155.17
 — 146.62
 — 136.79
 — 132.17
 — 130.27
 — 124.72
 — 123.54
 — 114.92
 — 107.27
 — 104.30
 — 98.88

 — 55.82

 — 25.82
 — 22.23
 — 18.14



Current Data Parameters
 NAME YinYangHuoSu-13C NMR Acetone-d6
 EXPNO 2
 PROCNO 1

F2 - Acquisition Parameters

INSTRUM spect
 PROBHD 5 mm PABBO BB/
 PULPROG zgig30
 TD 65536
 SOLVENT Acetone
 NS 7572
 DS 4
 SWH 24038.461 Hz
 FIDRES 0.366798 Hz
 AQ 1.3631488 sec
 RG 202.5
 DW 20.800 usec
 DE 6.50 usec
 TE 301.2 K
 D1 2.0000000 sec
 D11 0.0300000 sec
 TD0 1

===== CHANNEL f1 =====
 SFO1 100.6228298 MHz
 NUC1 13C
 P1 10.79 usec
 PLW1 51.0000000 W

===== CHANNEL f2 =====
 SFO2 400.1316005 MHz
 NUC2 1H
 CPDPRG[2] waltz16
 PCPD2 90.00 usec
 PLW2 11.50800037 W
 PLW12 0.33519000 W

F2 - Processing parameters
 SI 262144
 SF 100.6126784 MHz
 WDW EM
 SSB 0
 LB 1.00 Hz
 GB 0
 PC 1.40
 SINO 0