

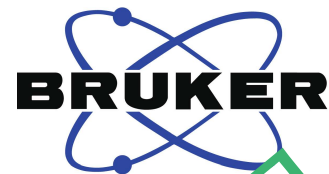
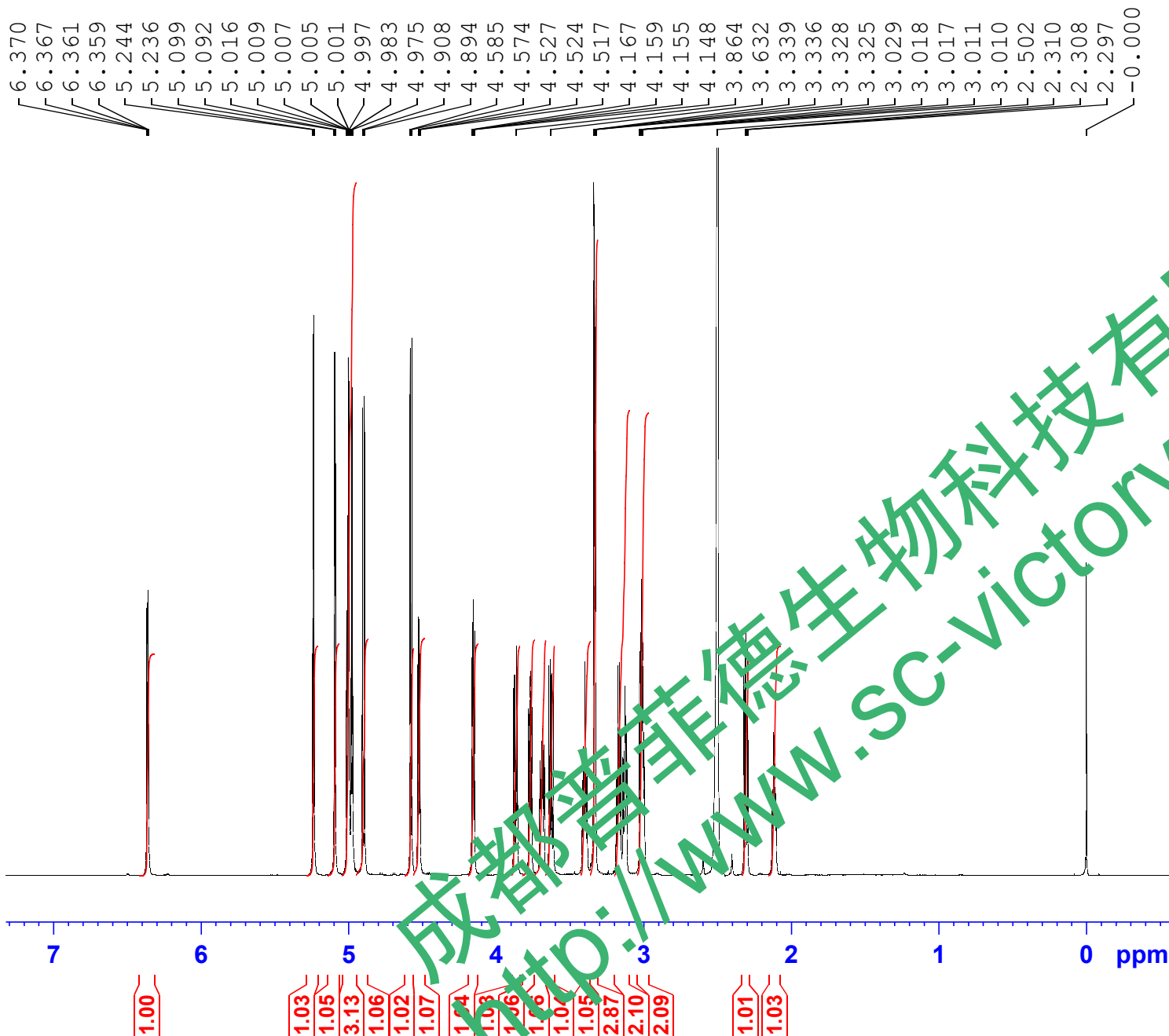
Current Data Parameters
NAME zhchun
EXPNO 2
PROCNO 1

F2 - Acquisition Parameters

Time 10.26 h
INSTRUM Avance
PROBHD Z168277_0001 (
PULPROG zgpg30
TD 65536
SOLVENT DMSO
NS 200
DS 4
SWH 41666.668 Hz
FIDRES 1.271566 Hz
AQ 0.7864320 sec
RG 101
DW 12.000 usec
DE 18.00 usec
TE 298.0 K
D1 2.00000000 sec
D11 0.03000000 sec
TD0 1
SFO1 176.0830366 MHz
NUC1 13C
P0 4.12 usec
P1 12.35 usec
PLW1 119.20999908 W
SFO2 700.2028008 MHz
NUC2 1H
CPDPRG[2] waltz65
PCPD2 160.00 usec
PLW2 9.84080029 W
PLW12 0.04311000 W
PLW13 0.08659900 W

F2 - Processing parameters
SI 32768
SF 176.0654300 MHz
WDW EM
SSB 0
LB 1.00 Hz
GB 0
PC 1.40

成都普菲德生物科技有限公司
http://www.sc-victory.com



Current Data Parameters
 NAME zhuoqun
 EXPNO 1
 PROCNO 1

F2 - Acquisition Parameters

TIME 10.16 h
 INSTRUM Avance
 PROBLV Z168277_0001 ()
 PULPROG zg30
 PD 65536
 SOLVENT DMSO
 NS 16
 DS 2
 SWH 13888.889 Hz
 FIDRES 0.423855 Hz
 AQ 2.3592961 sec
 RG 91.7095
 SI 36.000 usec
 DE 11.69 usec
 TE 298.0 K
 D1 1.00000000 sec
 TD0 1
 SFO1 700.2043237 MHz
 NUC1 1H
 P0 3.53 usec
 P1 10.59 usec
 PLW1 9.84080029 W

F2 - Processing parameters

SI 65536
 SF 700.2000043 MHz
 WDW EM
 SSB 0
 LB 0.30 Hz
 GB 0
 PC 1.00

成都普菲德生物科技有限公司
 www.sc-victory.com