

Display Report

Analysis Info

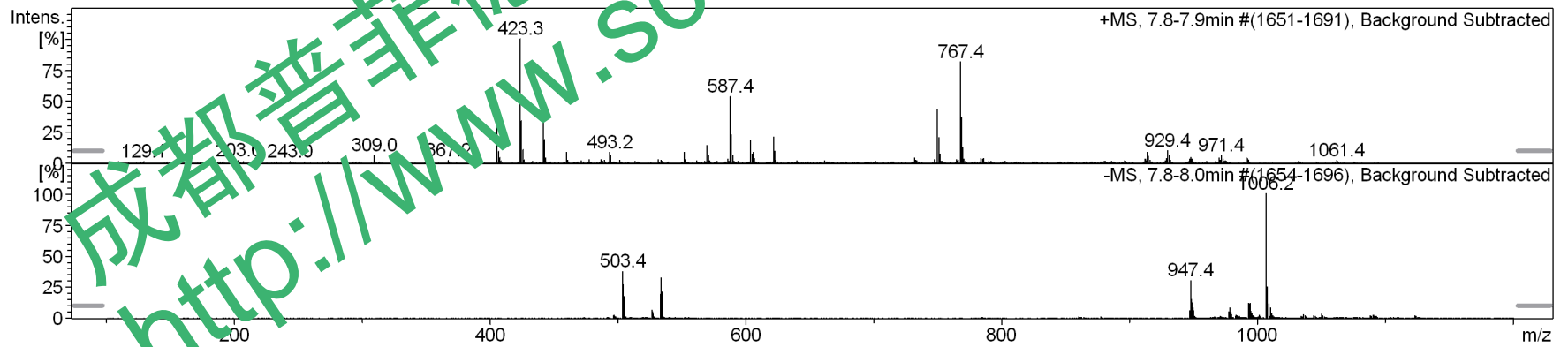
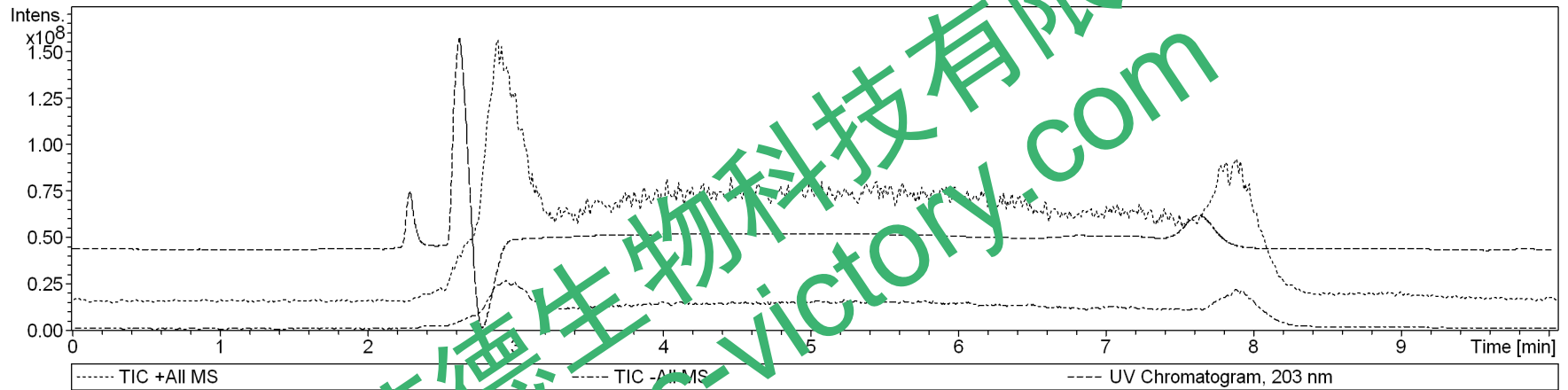
Analysis Name D:\Data\test\0922\Re_3_01_1813.d
Method 1813.m
Sample Name Re
Comment

Acquisition Date 9/22/2014 3:26:10 PM

Operator bruker
Instrument am Zon SL

Acquisition Parameter

Ion Source Type	ESI	Ion Polarity	Positive	Alternating Ion Polarity	on
Mass Range Mode	UltraScan	Scan Begin	100 m/z	Scan End	1200 m/z
Capillary Exit	140.0 V	n/a	n/a	Trap Drive	63.9
Accumulation Time	5737 μ s	Averages	3 Spectra	Auto MS/MS	off



Display Report

Analysis Info

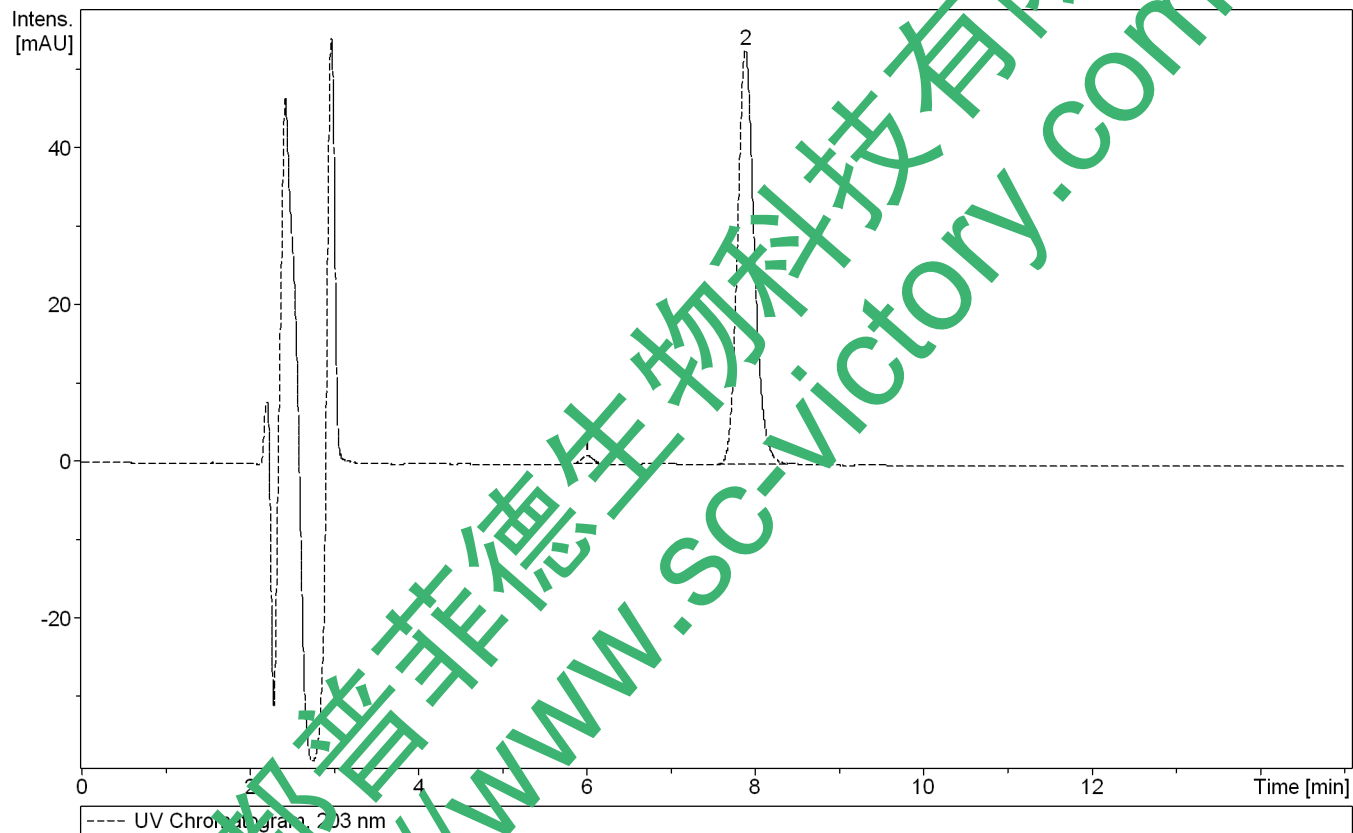
Analysis Name D:\Data\test\0818\Re_3_01_1665.d
Method 1665.m
Sample Name Re
Comment

Acquisition Date 8/19/2014 12:56:59 PM

Operator bruker
Instrument amaZon SL

Acquisition Parameter

Ion Source Type	ESI	Ion Polarity	Negative	Alternating Ion Polarity	on
Mass Range Mode	UltraScan	Scan Begin	100 m/z	Scan End	1200 m/z
Capillary Exit	-140.0 V	n/a	n/a	Trap Drive	63.3
Accumulation Time	17738 μ s	Averages	3 Spectra	Auto MS/MS	off



#	RT [min]	Area	Area Frac. %
1	6.0	10.25	1.4
2	7.9	34.70	8.6

Display Report

Analysis Info

Analysis Name D:\Data\test\0818\Re_3_01_1665.d
Method 1665.m
Sample Name Re
Comment

Acquisition Date 8/19/2014 12:56:59 PM

Operator bruker
Instrument amaZon SL

Acquisition Parameter

Ion Source Type	ESI	Ion Polarity	Negative	Alternating Ion Polarity	on
Mass Range Mode	UltraScan	Scan Begin	100 m/z	Scan End	1200 m/z
Capillary Exit	-140.0 V	n/a	n/a	Trap Drive	63.3
Accumulation Time	17738 μ s	Averages	3 Spectra	Auto MS/MS	off

