

Display Report

Analysis Info

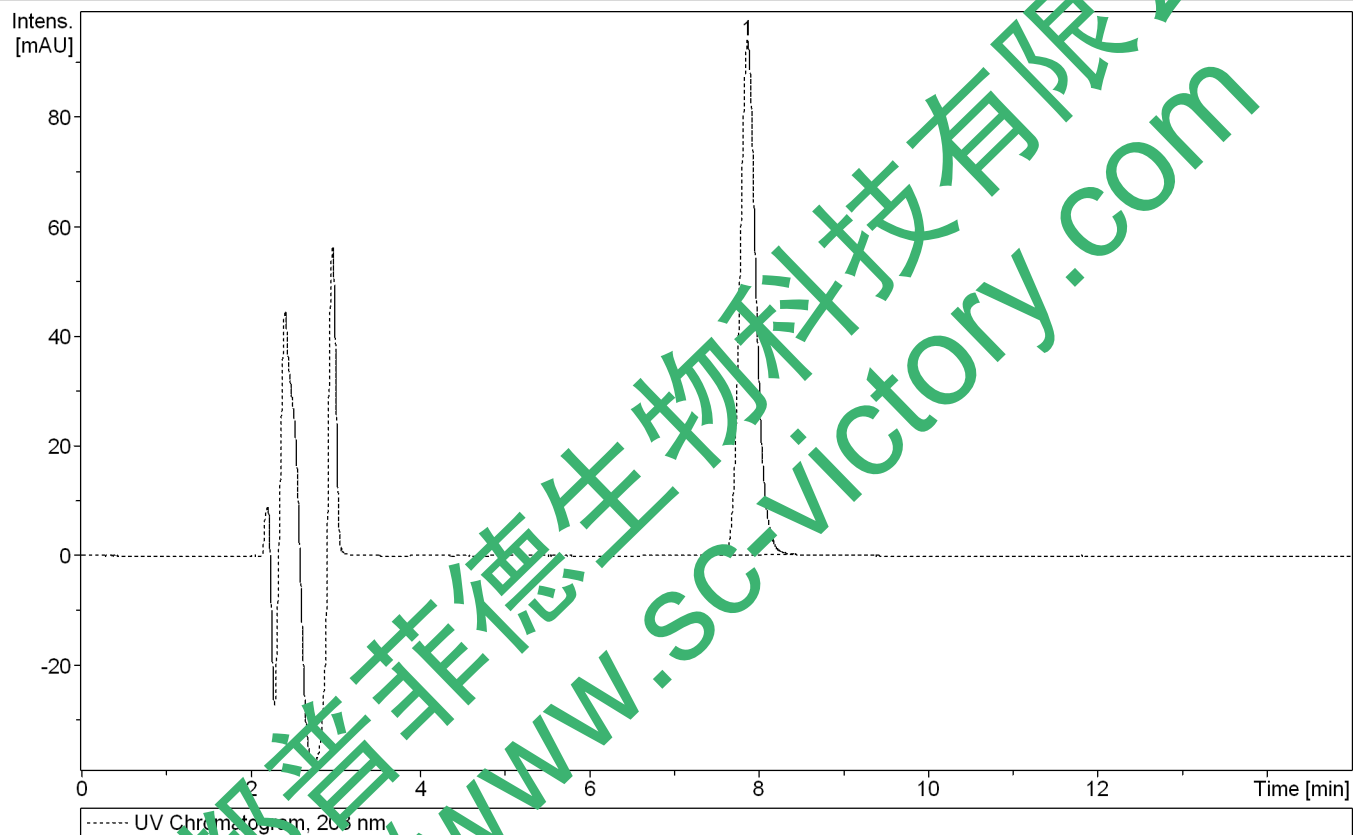
Analysis Name D:\Data\test\0818\Rg1_2_01_1666.d
Method 1666.m
Sample Name Rg1
Comment

Acquisition Date 8/19/2014 1:13:47 PM

Operator bruker
Instrument amaZon SL

Acquisition Parameter

Ion Source Type	ESI	Ion Polarity	Negative	Alternating Ion Polarity	on
Mass Range Mode	UltraScan	Scan Begin	100 m/z	Scan End	1200 m/z
Capillary Exit	-140.0 V	n/a	n/a	Trap Drive	63.2
Accumulation Time	17171 µs	Averages	3 Spectra	Auto MS/MS	off



#	RT [min]	Area	Area Frac. %
1	7.9	117.	100.0

