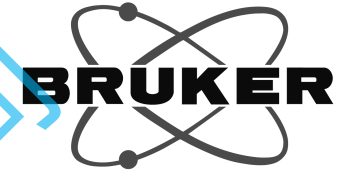


6.871
6.851
6.810
6.806
6.772
6.768
6.752
6.748
— 5.703

4.362
4.349
— 3.878

2.224
2.205
2.186
1.686
1.667
1.650
1.631
1.613
1.309
1.292
1.278
1.272
1.260
0.890
0.874
0.856



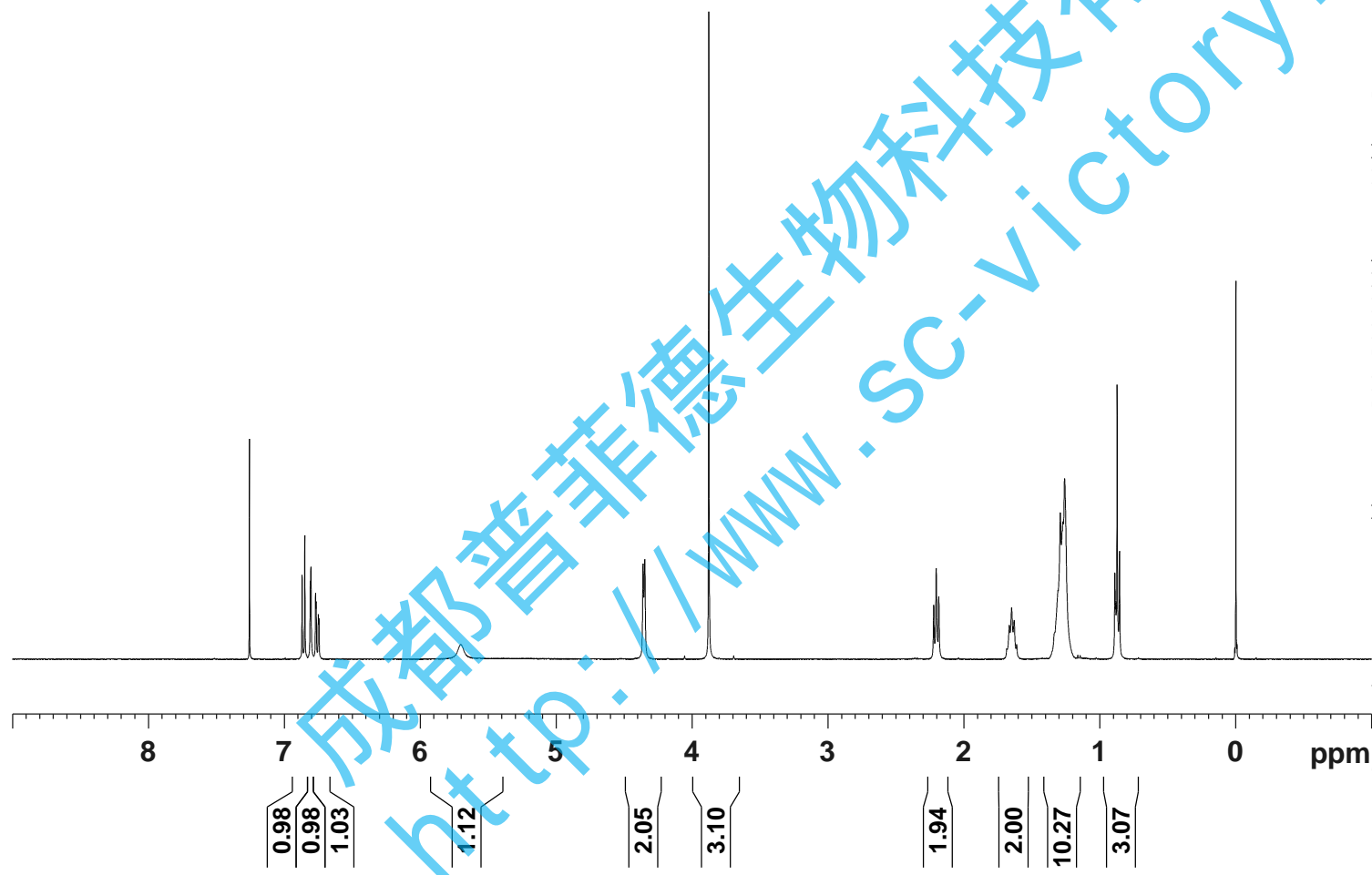
Current Data Parameters
NAME LaJiaoJian-1H NMR CDC13
EXPNO 1
PROCNO 1

F2 - Acquisition Parameters

INSTRUM spect
PROBHD 5 mm PABBO BB/
PULPROG zg30
TD 65536
SOLVENT CDC13
NS 16
DS 2
SWH 8012.820 Hz
FIDRES 0.122266 Hz
AQ 4.0894465 sec
RG 202.5
DW 62.400 usec
DE 6.50 usec
TE 301.2 K
D1 1.00000000 sec
TD0 1

==== CHANNEL f1 =====
SF01 400.1324710 MHz
NUC1 1H
P1 14.79 usec
PLW1 11.50800037 W

F2 - Processing parameters
SI 65536
SF 400.1300100 MHz
WDW EM
SSB 0
LB 0.30 Hz
GB 0
PC 1.00
SR 10.03 Hz



成都普菲德生物科技有限公司
http://www.sc-victory.com

— 172.88

— 146.72
— 145.17

— 130.47

— 120.85

— 114.38
— 110.73

— 55.98

— 43.57
— 36.91
— 31.82
— 29.34
— 29.33
— 29.16
— 25.81
— 22.65
— 14.08



Current Data Parameters
NAME LaticioJian-13C NMR CDC13
EXPNO 1
PROCNO 1

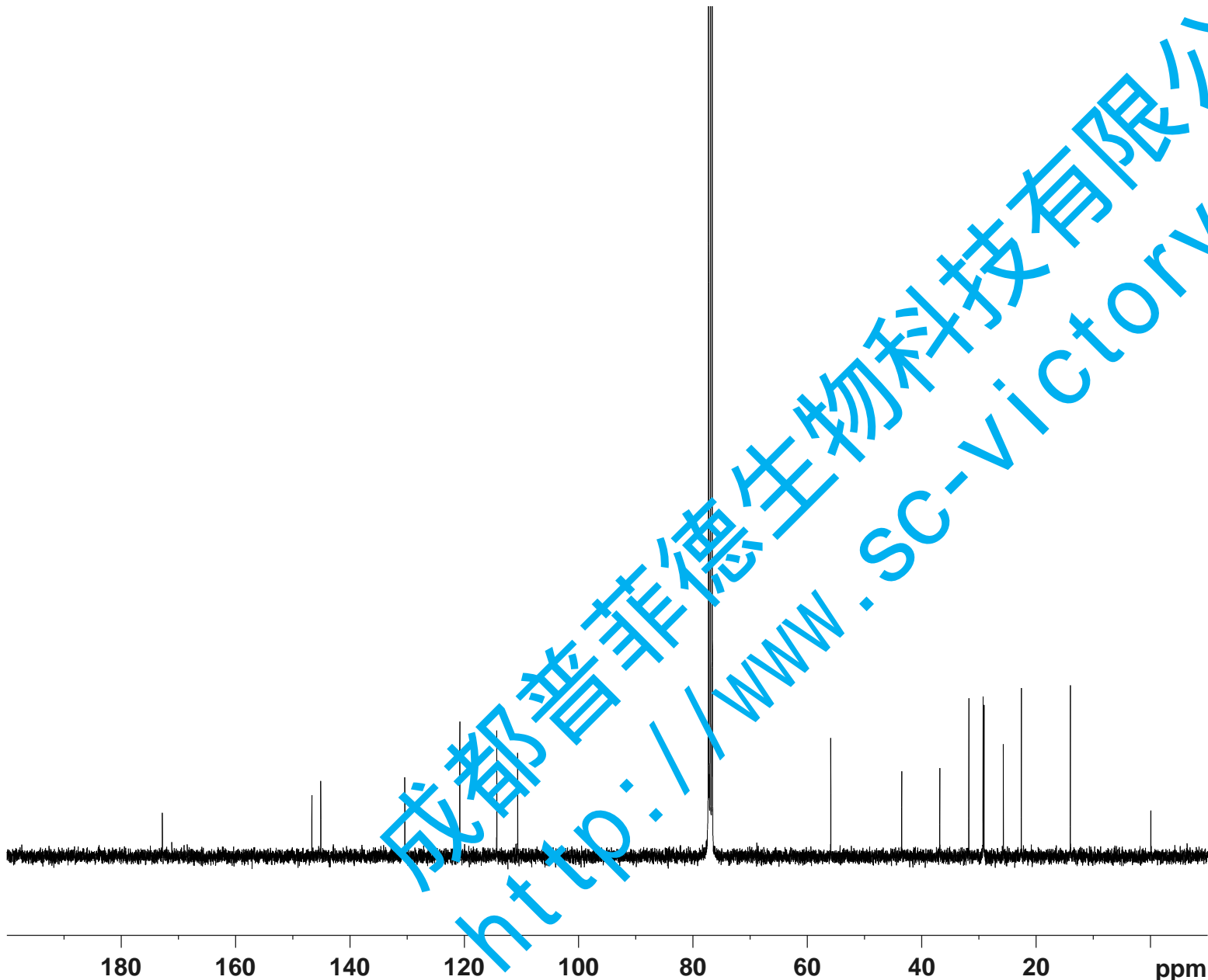
F2 - Acquisition Parameters

INSTRUM spect
PROBHD 5 mm PABBO BB/
PULPROG zgig30
TD 65536
SOLVENT CDC13
NS 2048
DS 4
SWH 24038.461 Hz
FIDRES 0.366798 Hz
AQ 1.3631488 sec
RG 202.5
DW 20.800 usec
DE 6.50 usec
TE 301.1 K
D1 2.0000000 sec
D11 0.0300000 sec
TD0 1

==== CHANNEL f1 =====
SFO1 100.6228298 MHz
NUC1 13C
P1 10.13 usec
PLW1 51.0000000 W

==== CHANNEL f2 =====
SFO2 400.1316005 MHz
NUC2 1H
CPDPRG[2] waltz16
PCPD2 90.00 usec
PLW2 11.50800037 W
PLW12 0.31077999 W

F2 - Processing parameters
SI 262144
SF 100.6127668 MHz
WDW EM
SSB 0
LB 1.00 Hz
GB 0
PC 1.40
SR -2.24 Hz



成都普菲德生物科技有限公司
http://www.sc-victory.com