

5.251
5.243
4.546
4.526
4.495
4.211
4.206
4.126
4.005
3.997
3.870
3.866
3.862
3.853
3.845
3.836
3.829
3.812
3.804
3.780
3.600
3.598
3.572
3.554
3.552
3.488
3.385
3.378
3.363
3.359
3.346
3.293
1.933
1.433
1.427
1.417
1.411
1.398
1.392
1.378
1.363
1.357
1.352
1.304
1.289
1.254
0.977
0.963
0.945
0.927
0.915
0.881
0.777

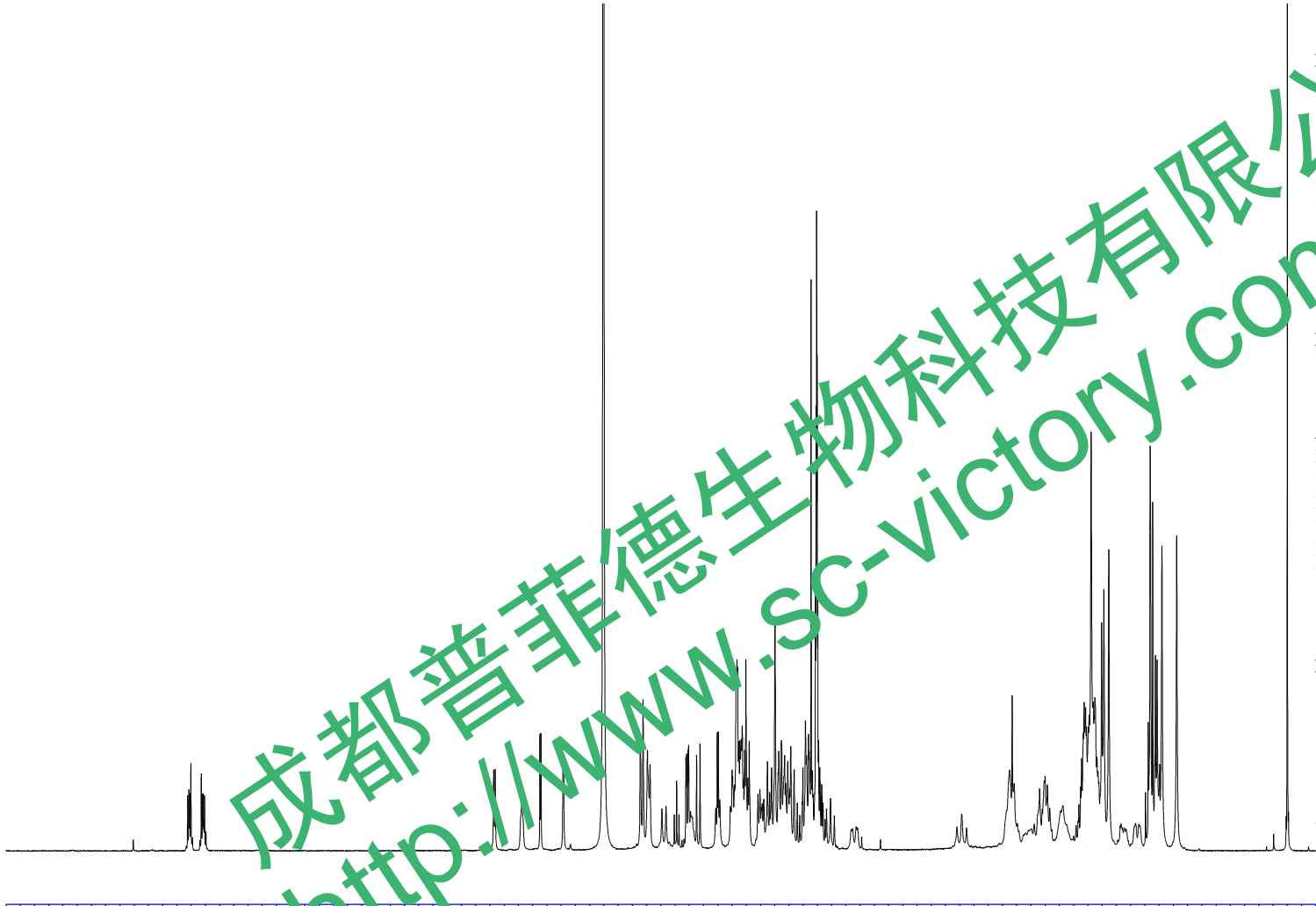


Current Data Parameters
NAME: JieGeng 3#-1H NMR CD3OD
EXPNO: 1
PROCNO: 1

F2 - Acquisition Parameters
Date_: 20170321
Time: 19.12
INSTRUM: spect
PROBHD: 5 mm PABBO BB/
PULPROG: zg30
TD: 65536
SOLVENT: MeOD
NS: 16
DS: 2
SWH: 8012.820 Hz
FIDRES: 0.122266 Hz
AQ: 4.0894465 sec
RG: 92
DW: 62.400 usec
DE: 6.50 usec
TE: 301.2 K
D1: 2.00000000 sec
TD0: 1

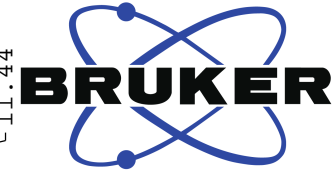
===== CHANNEL f1 =====
SFO1: 400.1324710 MHz
NUC1: 1H
P1: 14.79 usec
PLW1: 11.50800037 W

F2 - Processing parameters
SI: 65536
SF: 400.1300090 MHz
WDW: EM
SSB: 0
LB: 0.30 Hz
GB: 0
PC: 1.00
SR: 9.02 Hz



0.95
0.98
0.92
1.00
0.93
0.97
2.18
1.99
1.18
2.45
1.00
2.00
10.53
1.98
4.02
6.26
6.37
2.88
1.00
1.51
4.84
8.02
22.14
2.41
11.47
2.96

177.11
169.39
144.78
133.64
132.44
132.38
129.90
123.82
111.21
106.69
105.47
105.22
101.44
94.28
88.42
85.90
83.85
80.51
78.25
77.95
77.86
77.69
75.74
75.50
75.08
74.53
72.48
72.14
71.61
69.94
69.83
69.19
68.96
67.60
66.86
66.70
65.20
64.46
62.67
62.35
50.44
49.90
48.37
43.03
41.07
40.23
31.67
31.38
30.17
25.00
24.05
14.42
11.44



Current Data Parameters

NAME JieGeng 3#-13C NMR CD3OD
EXPNO 1
PROCNO 1

Acquisition Parameters

Date_ 20170323
Time 8.18
INSTRUM spect
PROBHD 5 mm PABBO BB/
PULPROG zgig30
TD 65536
SOLVENT MeOD
NS 4086
DS 4
SWH 24038.461 Hz
FIDRES 0.366798 Hz
AQ 1.3631488 sec
RG 202.5
DW 20.800 usec
DE 6.50 usec
TE 301.1 K
D1 2.00000000 sec
D11 0.03000000 sec
TD0 1

==== CHANNEL f1 =====

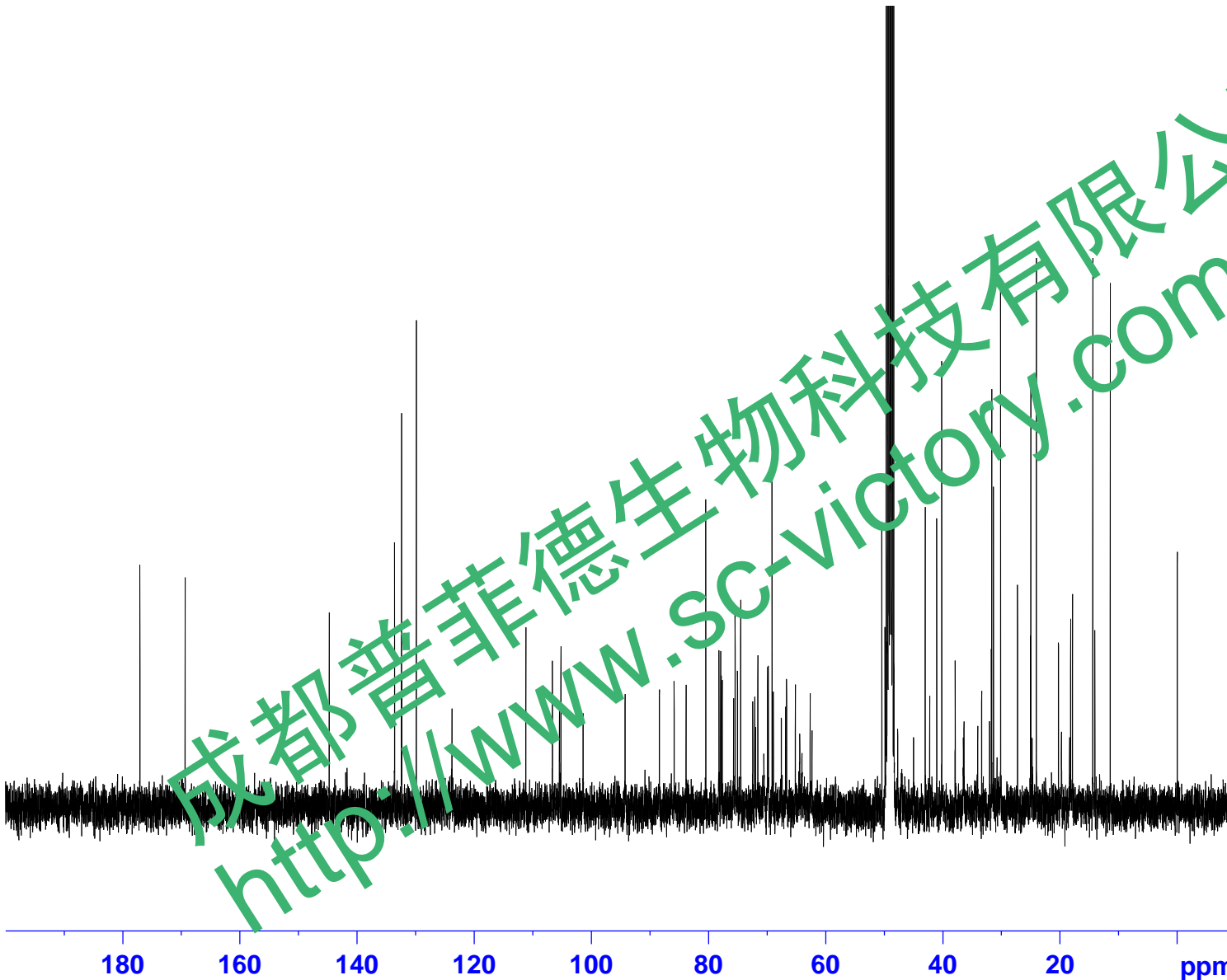
SFO1 100.6228298 MHz
NUC1 13C
P1 10.13 usec
PLW1 51.00000000 W

==== CHANNEL f2 =====

SFO2 400.1316005 MHz
NUC2 1H
CPDPRG[2] waltz16
PCPD2 90.00 usec
PLW2 11.50800037 W
PLW12 0.31077999 W

F2 - Processing parameters

SI 262144
SF 100.6126244 MHz
WDW EM
SSB 0
LB 1.00 Hz
GB 0
PC 1.40
SR -144.62 Hz



成都普菲德生物科技有限公司
http://www.sc-victory.com