



Current Data Parameters
NAME GEB
EXPNO 2
PROCNO 1

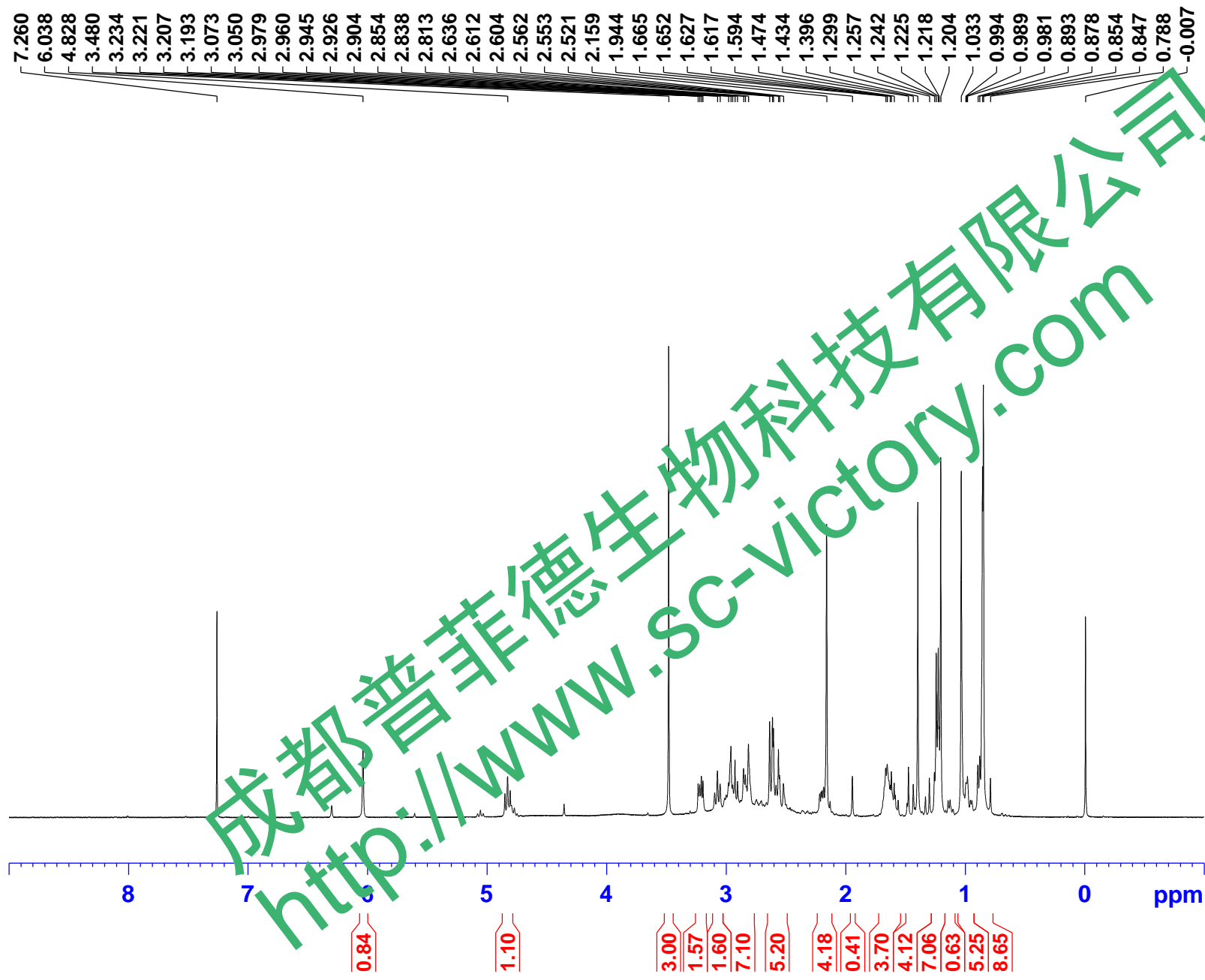
F2 - Acquisition Parameters
Date_ 20140505
Time 15.19
INSTRUM spect
PROBHD 5 mm PABBO BB-
PULPROG zgpg30
TD 65536
SOLVENT CDCl3
NS 2100
DS 4
SWH 24038.461 Hz
FIDRES 0.366798 Hz
AQ 1.3631988 sec
RG 194.85
DW 20.800 usec
DE 6.50 usec
TE 316.1 K
D1 2.00000000 sec
D11 0.03000000 sec
TD0 1

==== CHANNEL f1 =====
NUC1 13C
P1 9.24 usec
PLW1 95.00000000 W
SFO1 100.6228293 MHz

==== CHANNEL f2 =====
CPDPRG2 waltz16
NUC2 1H
PCPD2 80.00 usec
PLW2 19.00000000 W
PLW12 0.25292000 W
PLW13 0.16187000 W
SFO2 400.1316005 MHz

F2 - Processing parameters
SI 32768
SF 100.6127544 MHz
WDW EM
SSB 0
LB 1.00 Hz
GB 0
PC 1.00

成都普菲德生物科技有限公司
<http://www.sc-victory.com>



Current Data Parameters
NAME GEB
EXPNO 1
PROCNO 1

F2 - Acquisition Parameters
Date_ 20140505
Time 13.18
INSTRUM spect
PROBHD 5 mm PABBO BB-
PULPROG zg30
TD 65536
SOLVENT CDCl3
NS 16
DS 2
SWH 8223.685 Hz
FIDRES 0.125483 Hz
AQ 3.9846387 sec
RG 86.75
DW 60.800 usec
DE 6.50 usec
TE 300.3 K
D1 1.00000000 sec
TD0 1

==== CHANNEL f1 =====
NUC1 1H
P1 9.23 usec
PLW1 20.00000000 W
SFO1 400.1324710 MHz

F2 - Processing parameters
SI 65536
SF 400.1300096 MHz
WDW EM
SSB 0
LB 0.30 Hz
GB 0
PC 1.00

成都普菲德生物科技有限公司
<http://www.SC-victory.com>